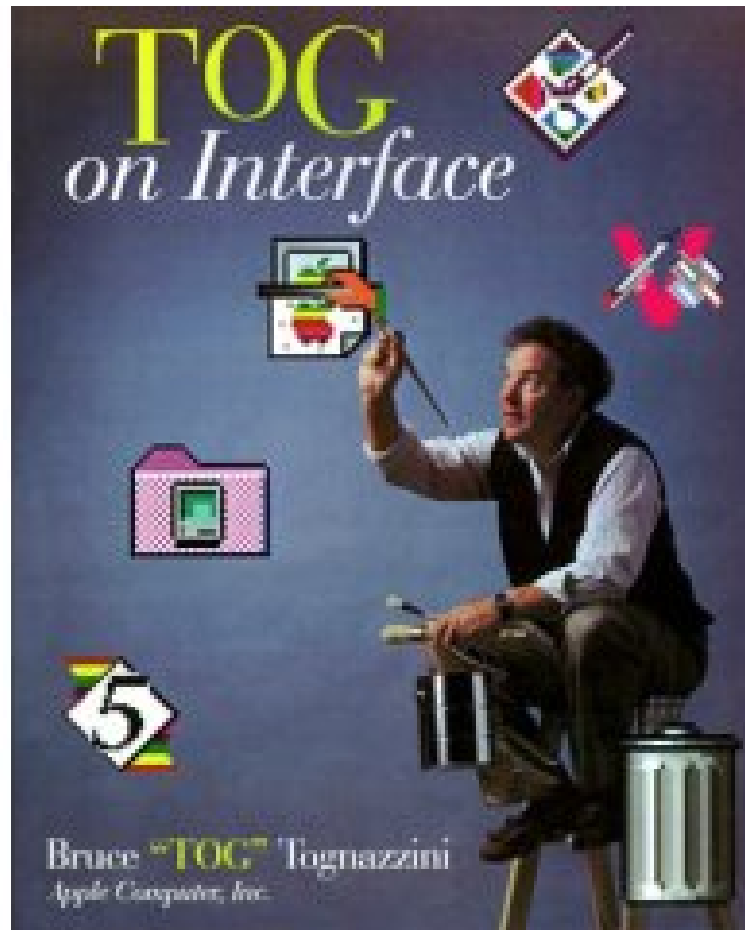
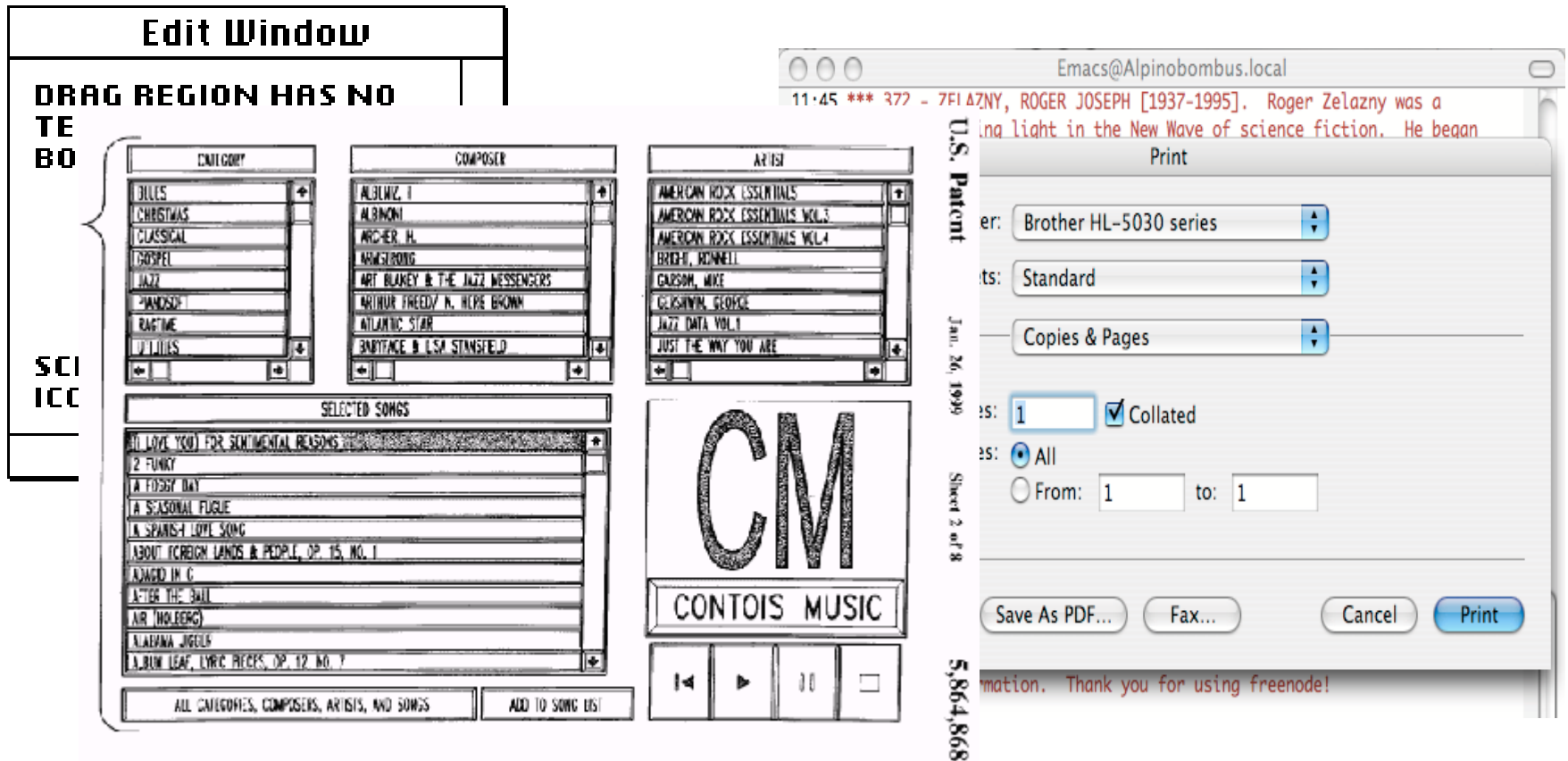


Golden tips



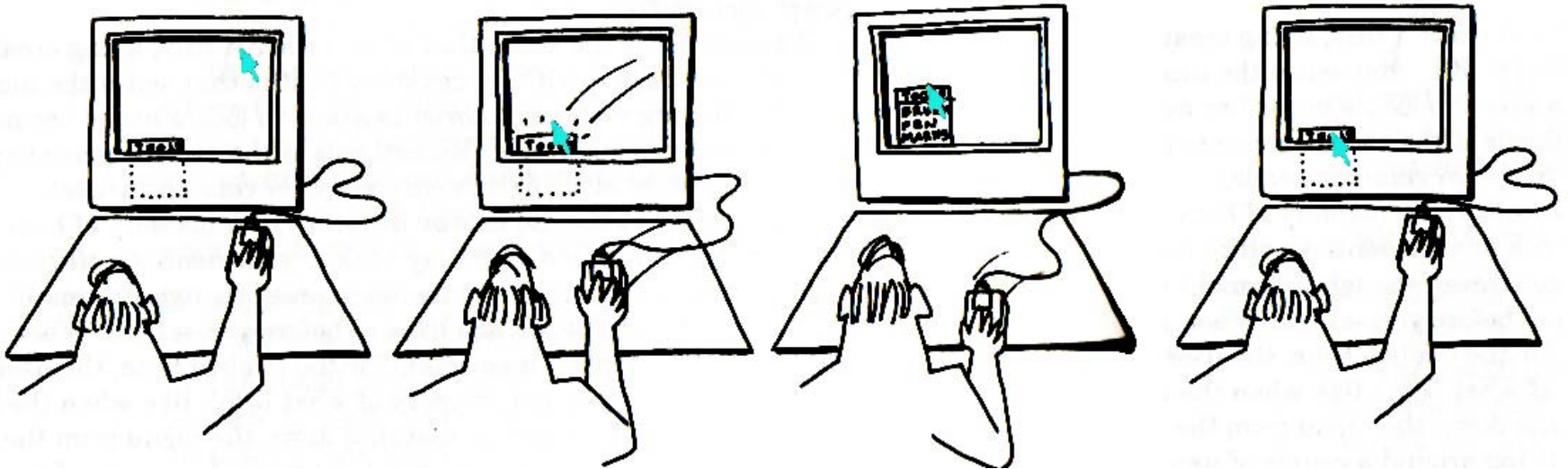
Assignor: Jun Hu
Group A Rick, Willem,
Jeroen, Spark

Expanding Macintosh interface



- When possible, evolve objects, rather than starting from scratch, modal dialog

kinesthetic model



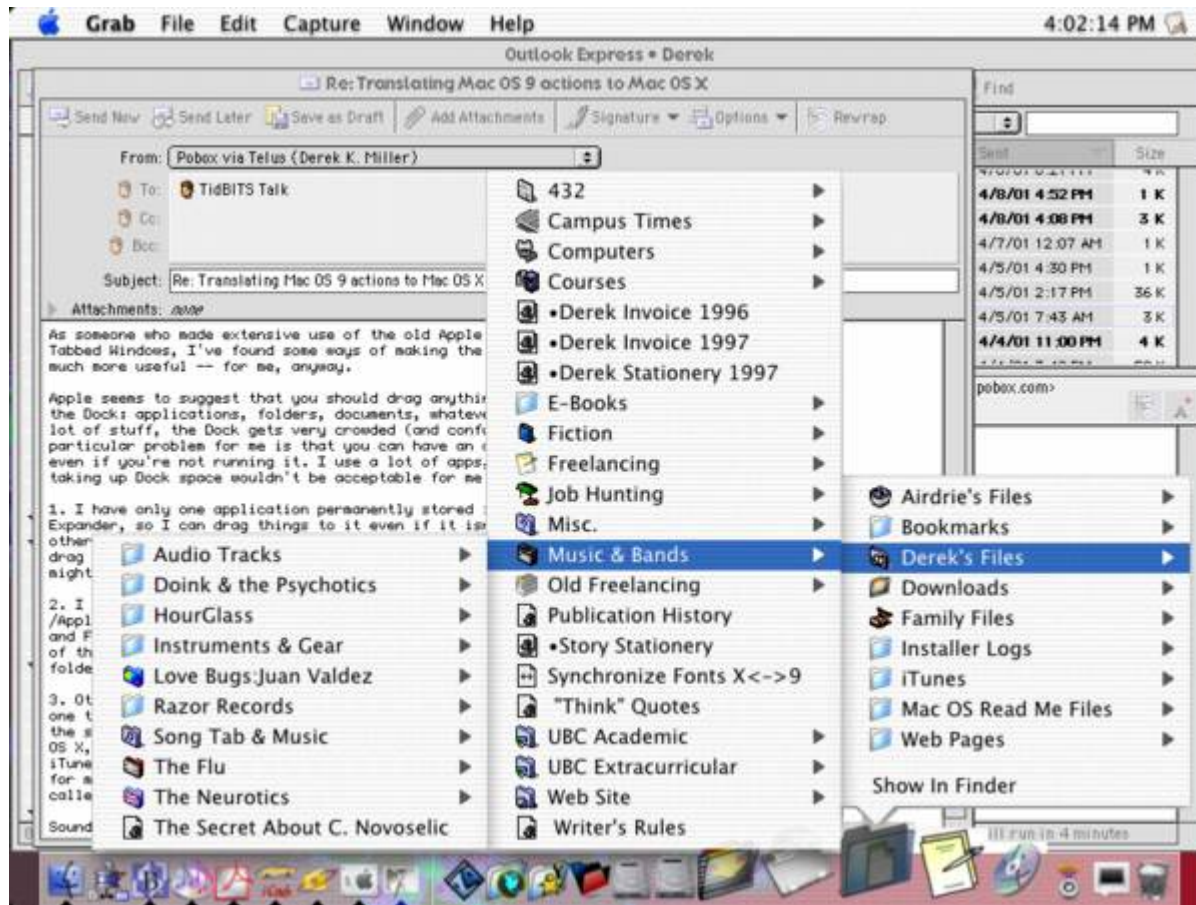
kinesthetic model should track the visual model

kinesthetic model



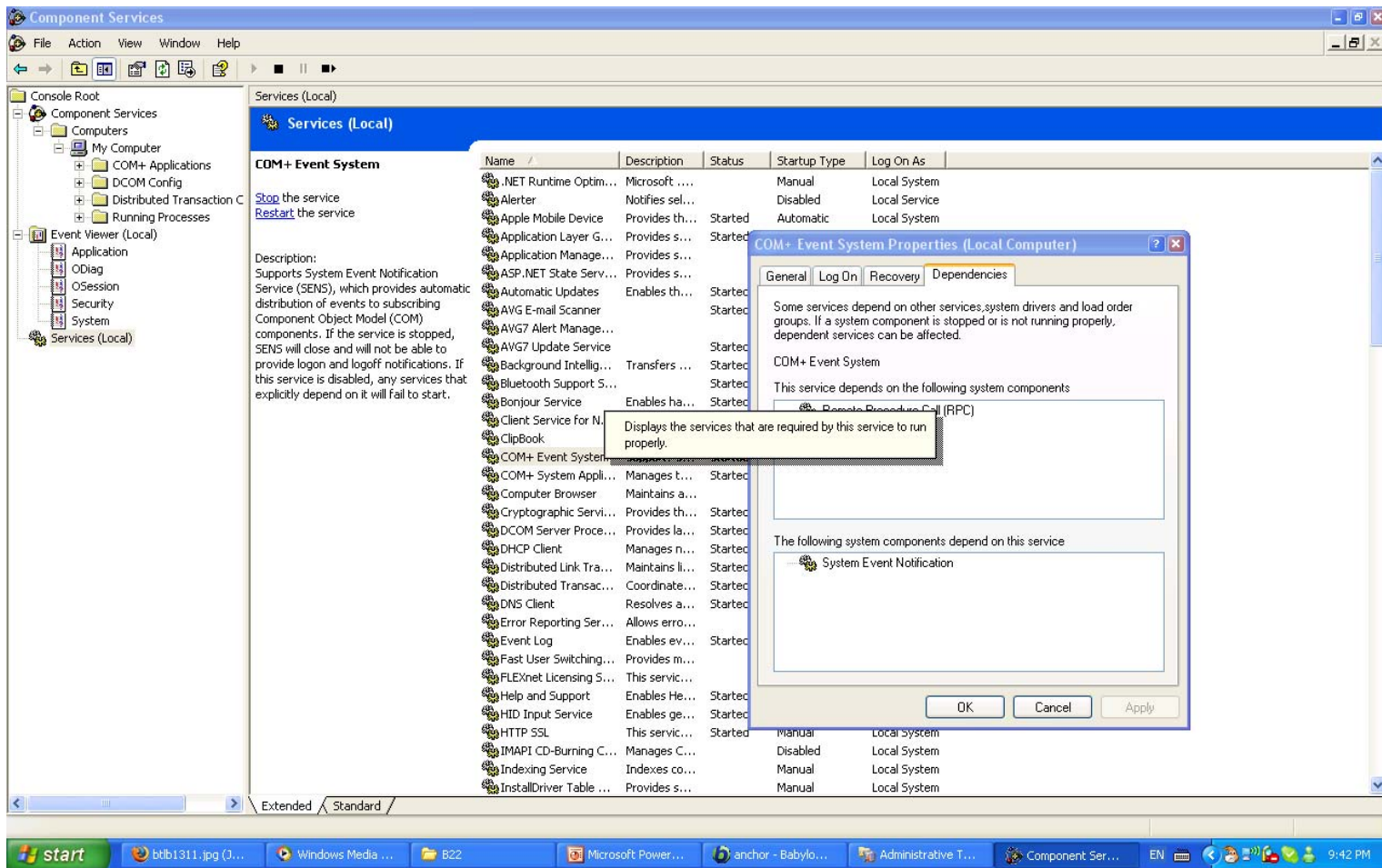
Principles of multimedia visible interface design

- Reduce/ eliminate navigation



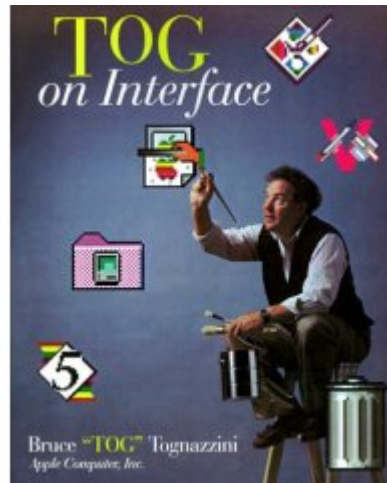
Hierarchical menus

Reduce/ eliminate navigation



Leave primary window open

Presentation



Part V More Mails

Part VI Overcoming Barriers to Success

Command keys aren't fast

Copy

Paste

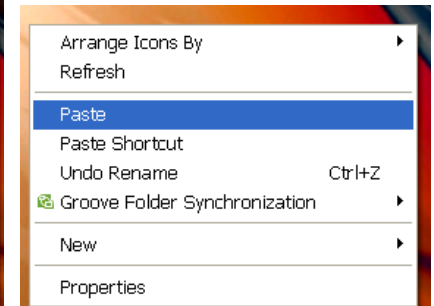
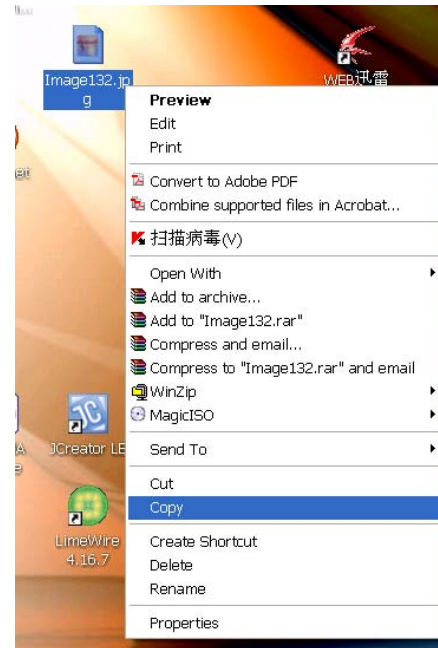
VS

Copy

Paste

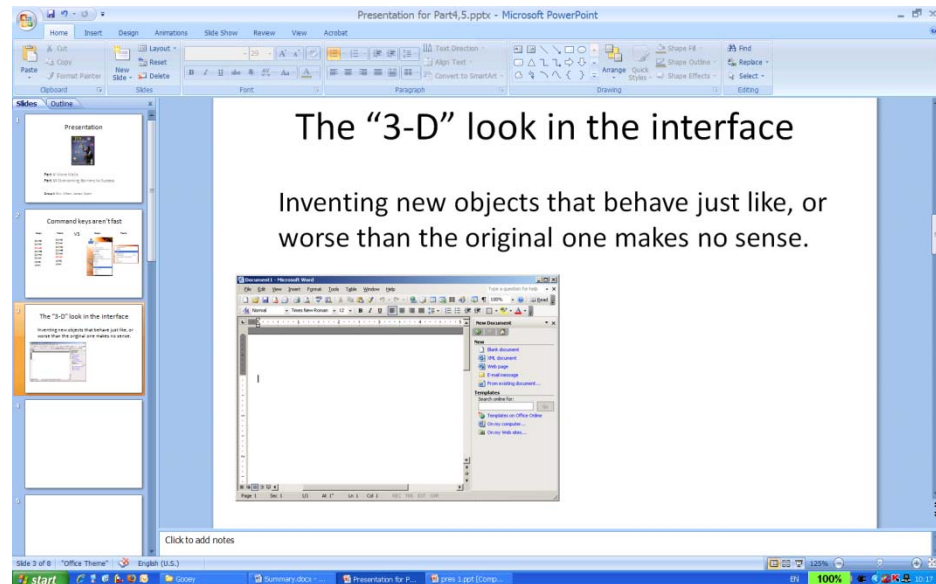
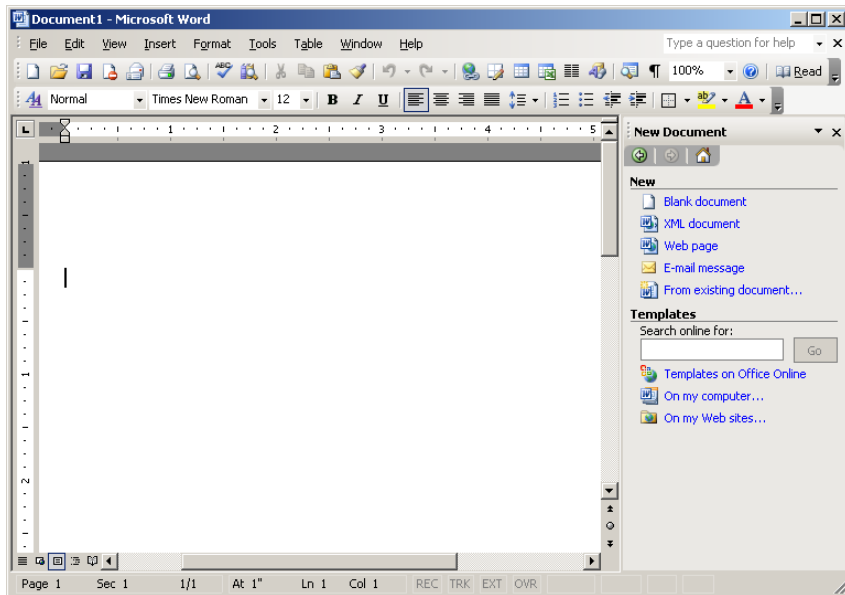
Ctrl+Z
Ctrl+X
Ctrl+C
Ctrl+B
Ctrl+A
Ctrl+V
Alt+C
Alt+V

Ctrl+Z
Ctrl+X
Ctrl+C
Ctrl+B
Ctrl+A
Ctrl+V
Alt+C
Alt+V



The “3-D” look in the interface

Inventing new objects that behave just like, or worse than the original one makes no sense.



Dragging a disk to the trash doesn't
initialize it

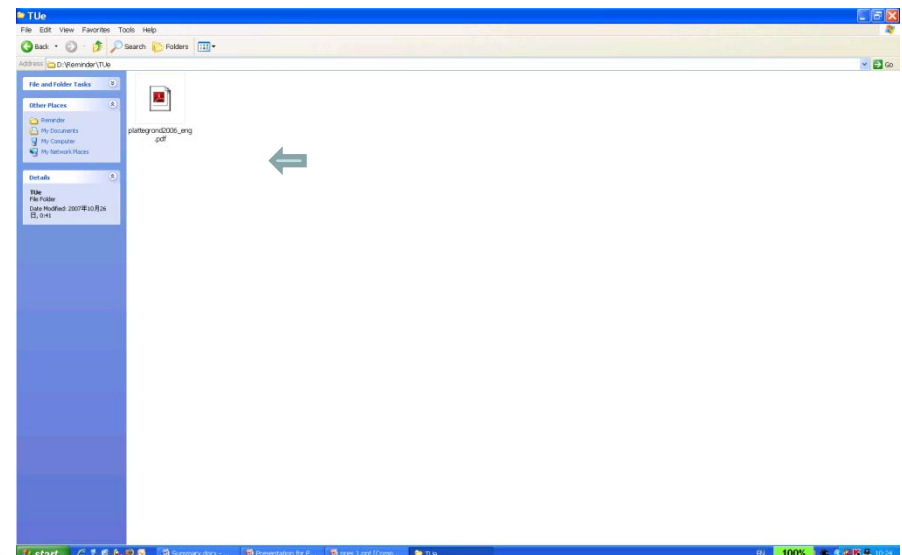
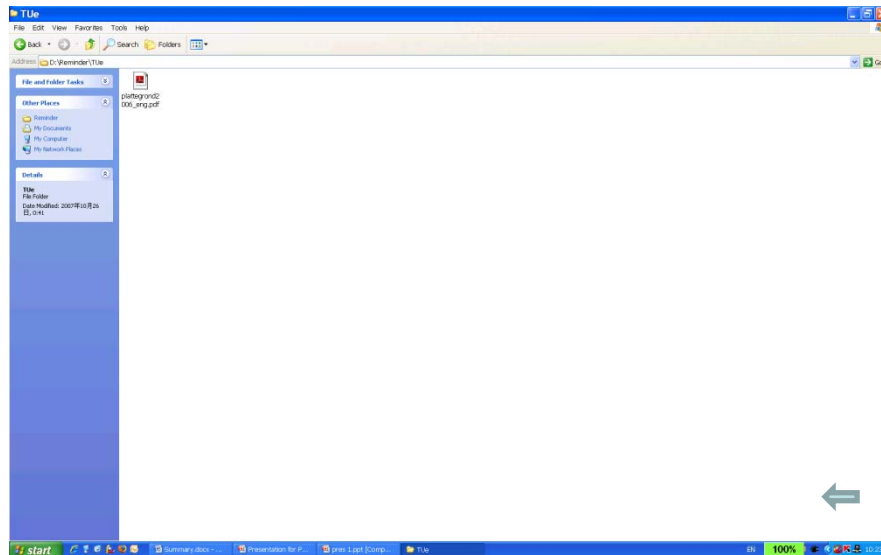
It is bad that nothing happened.

But it is far worse if it actually erase the disk.

Some natural ways to do that, like flinging
the disk up and to the right or left.

Move from a starting point to the target area

Fitts's law: $\text{Time} = 1.08 + 0.096 \log_2(\text{Distance}/\text{Size} + 0.5)$



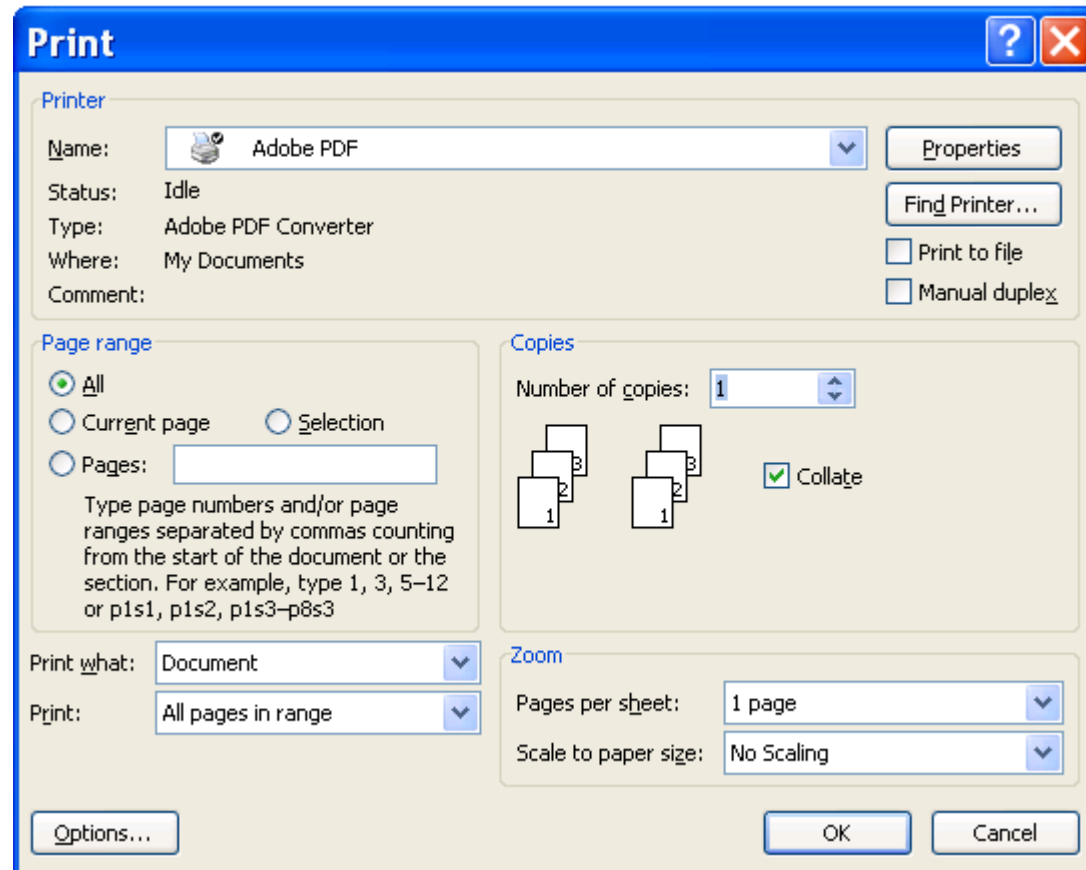
Do not use “Error”



Failure. See p.86 of manual or call
at 800-1234567.

OK

Use time-closure dialogs



Future

Documents –within –tool

Active documents: a living chart

Thank you for your attention.
Any questions?