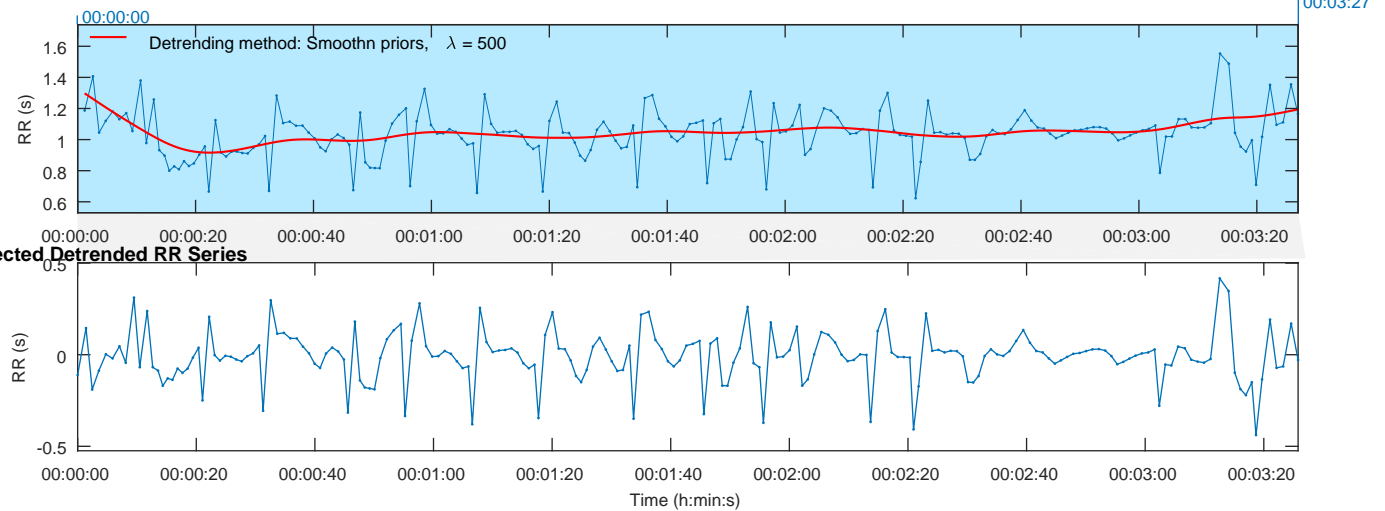


## RR Time Series

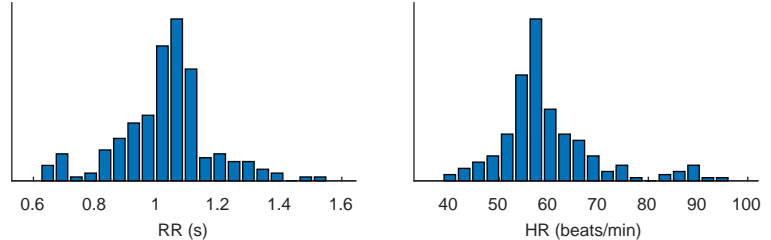
Results for a single sample



## Time-Domain Results

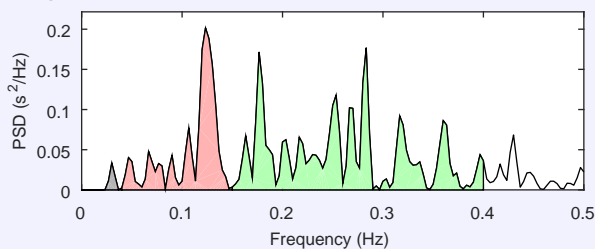
Variable	Units	Value
Mean RR*	(ms)	1029.7
STD RR (SDNN)	(ms)	137.7
Mean HR*	(beats/min)	59.66
Min/Max HR	(beats/min)	48.94/72.72
RMSSD	(ms)	188.8
NNxx	(beats)	97
pNNxx	(%)	48.5
RR triangular index		18.273
TINN	(ms)	631.0

## Distributions\*



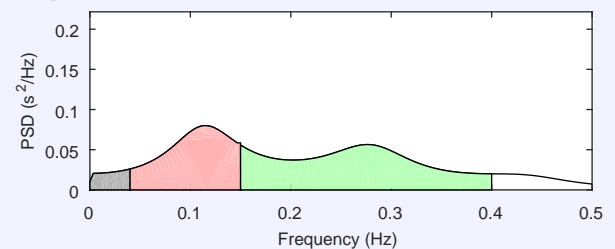
## Frequency-Domain Results

FFT spectrum (Welch's periodogram: 300 s window with 50% overlap)



Frequency Band	Peak (Hz)	Power (ms²)	Power (log)	Power (%)	Power (n.u.)
VLF (0-0.04 Hz)	0.0300	212	5.358	1.3	
LF (0.04-0.15 Hz)	0.1233	5246	8.565	31.9	32.3
HF (0.15-0.4 Hz)	0.2833	10925	9.299	66.4	67.3
Total		16453	9.708		
LF/HF		0.480			

AR Spectrum (AR model order = 16, not factorized)

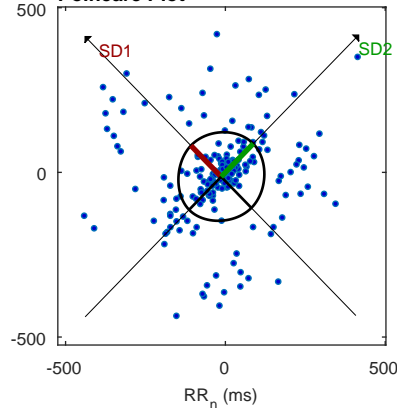


Frequency Band	Peak (Hz)	Power (ms²)	Power (log)	Power (%)	Power (n.u.)
VLF (0-0.04 Hz)	0.0400	872	6.771	5.2	
LF (0.04-0.15 Hz)	0.1133	6302	8.749	37.3	39.3
HF (0.15-0.4 Hz)	0.2767	9703	9.180	57.4	60.5
Total		16916	9.736		
LF/HF		0.650			

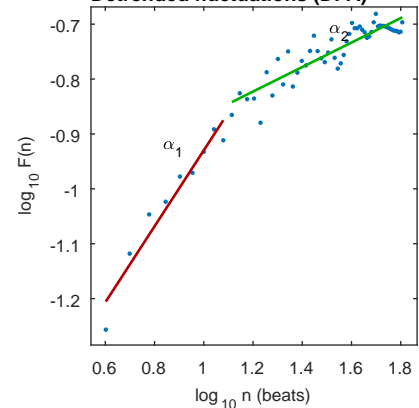
## Nonlinear Results

Variable	Units	Value
Poincaré Plot		
SD1	(ms)	133.8
SD2	(ms)	141.9
SD2/SD1		1.060
Approximate Entropy (ApEn)		0.753
Sample Entropy (SampEn)		0.950
Detrended Fluctuation Analysis (DFA)		
Short-term fluctuations, α1		0.692
Long-term fluctuations, α2		0.223

## Poincaré Plot



## Detrended fluctuations (DFA)



\*Results are calculated from the non-detrended selected RR series.