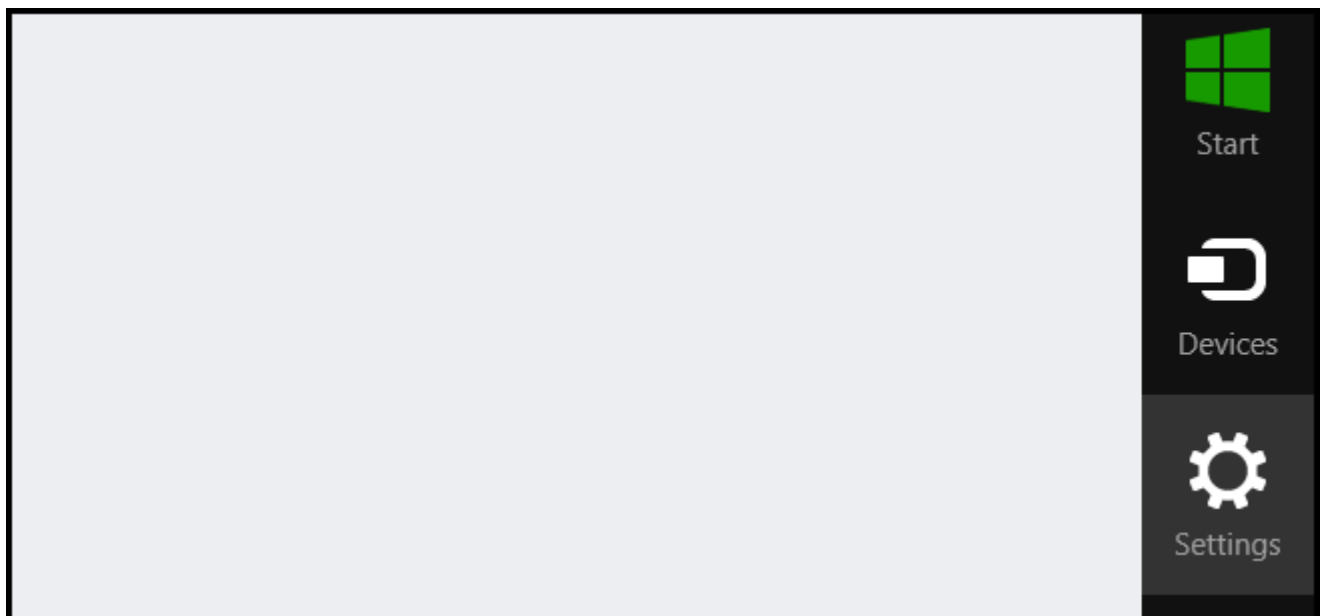


How to Disable Driver Signature Verification on 64-Bit Windows 8.1

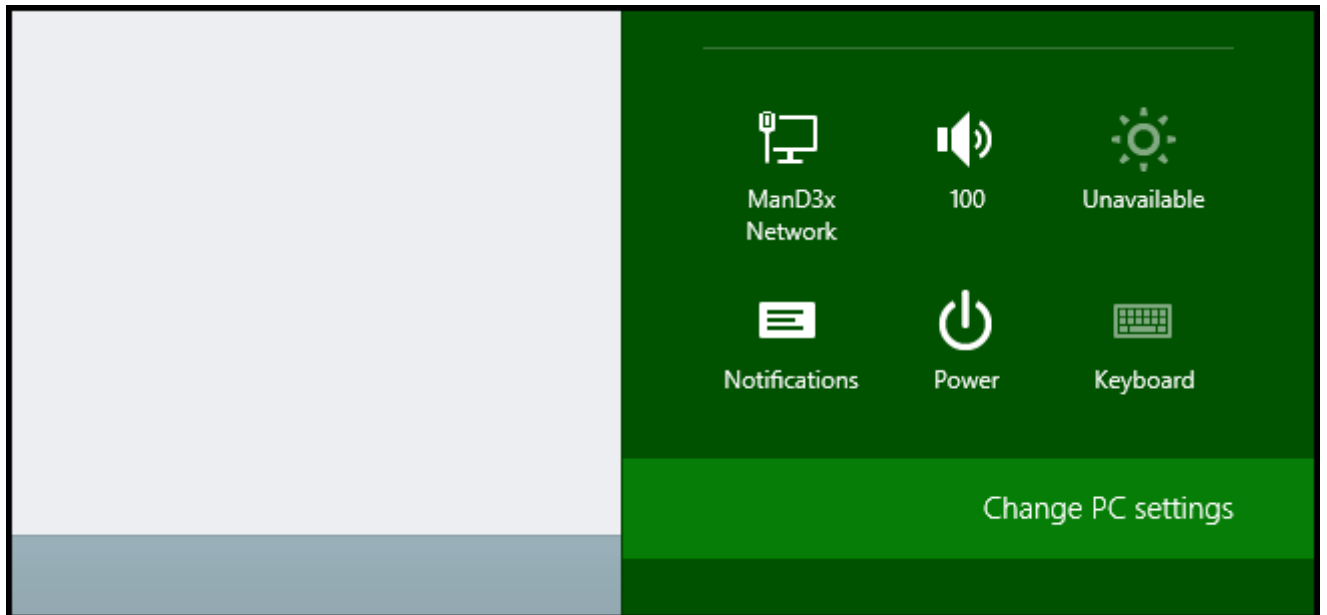
Option 1 – Has to be redone every time you want to install another unsigned driver

Source: <http://www.howtogeek.com/167723/how-to-disable-driver-signature-verification-on-64-bit-windows-8.1-so-that-you-can-install-unsigned-drivers/>

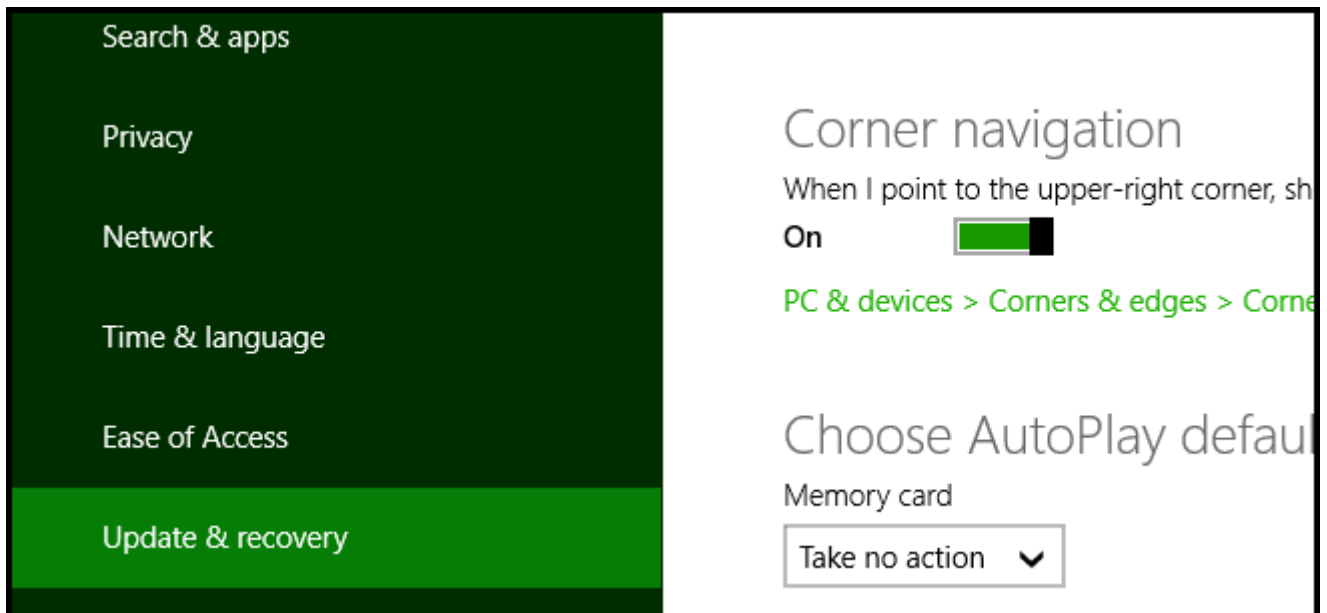
Press the Win + C keyboard combination to bring up the Charms Bar, then click on the Settings Charm.



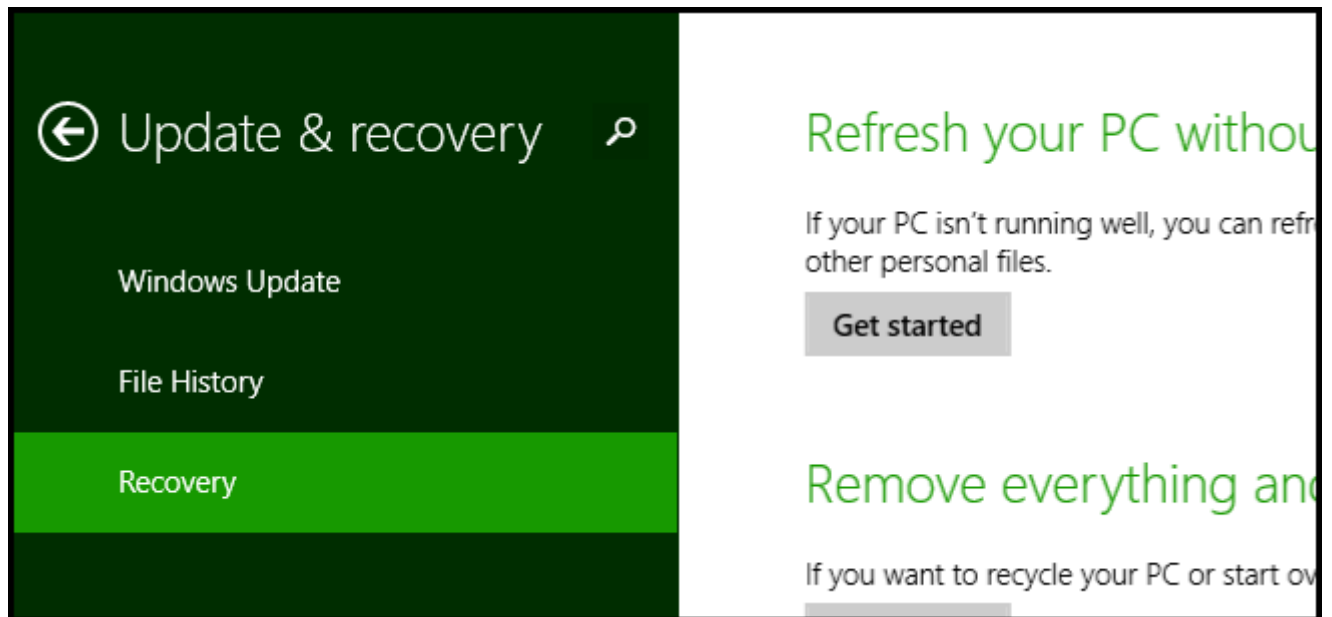
We need to head into the Modern Control Panel, so go ahead and click on the Change PC settings link.



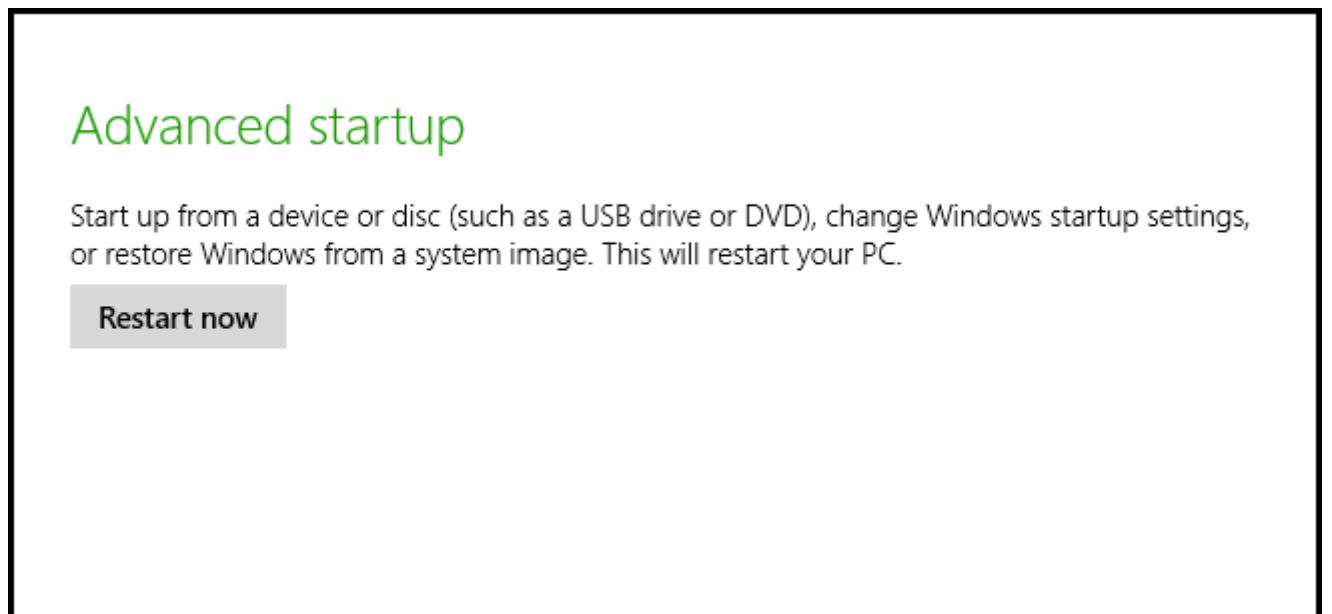
When the Control Panel opens, switch over to the “Update & recovery” section.



Then click on the Recovery option on the left hand side.



Once selected, you will see an advanced startup section appear on the right hand side. You will need to click on the "Restart now" button.



Once your Computer has rebooted you will need to choose the Troubleshoot option.

Choose an option



Continue

Exit and continue to Windows 8



Troubleshoot

Refresh or reset your PC, or use advanced tools

Then head into Advanced options.



refresh it without losing your files



Reset your PC

If you want to remove all of your files, you can reset your PC completely



Advanced options

Then Startup Settings.

Advanced options



System Restore

Use a restore point recorded on your PC to restore Windows



Startup Settings

Change Windows startup behavior



Startup Repair

Fix problems that keep Windows from loading

Since we are modifying boot time configuration settings, you will need to restart your Computer one last time.

Restart to change Windows options such as:

- Enable low-resolution video mode
- Enable debugging mode
- Enable boot logging
- Enable Safe Mode
- Disable driver signature enforcement
- Disable early-launch anti-malware protection
- Disable automatic restart on system failure

Restart

Finally, you will be given a list of startup settings that you can change. The one we are looking for is “Disable driver signature enforcement”. To choose the setting, you will need to press the F7 key.

Startup Settings

Press a number to choose from the options below:

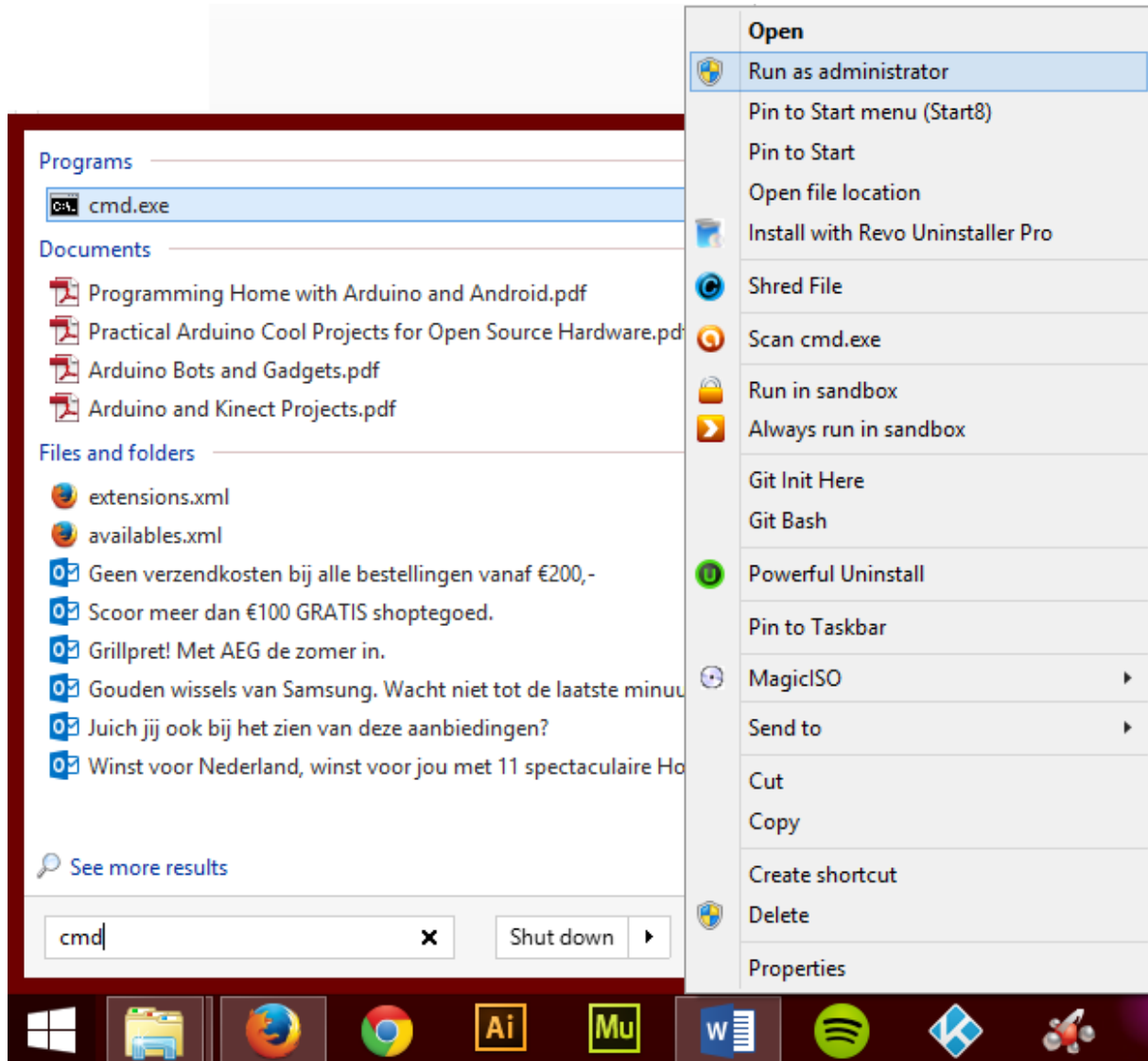
Use number keys or functions keys F1-F9.

- 1) Enable debugging
- 2) Enable boot logging
- 3) Enable low-resolution video
- 4) Enable Safe Mode
- 5) Enable Safe Mode with Networking
- 6) Enable Safe Mode with Command Prompt
- 7) Disable driver signature enforcement
- 8) Disable early launch anti-malware protection
- 9) Disable automatic restart after failure

Option 2 – Permanent, no need to do anything next time you want to install an unsigned driver

Source: <http://www.eightforums.com/drivers-hardware/46776-permanently-disable-driver-signing-windows-8-8-1-a.html>

1. Open up Command Prompt as an admin.



2. Type these lines => One By One and press enter accordingly.

```
----> bcdedit -set loadoptions DISABLE_INTEGRITY_CHECKS
```

```
----> bcdedit -set TESTSIGNING ON
```

```
Administrator: C:\Windows\System32\cmd.exe
Microsoft Windows [Version 6.3.9600]
(c) 2013 Microsoft Corporation. All rights reserved.

C:\Windows\system32>bcdedit -set loadoptions DISABLE_INTEGRITY_CHECKS
The operation completed successfully.

C:\Windows\system32>bcdedit -set TESTSIGNING ON
The operation completed successfully.

C:\Windows\system32>_
```

3. Please do note that this will show a watermark on the bottom right corner of your screen stating testmode.

