



# Processing and Android

**TU** / **e**

Technische Universiteit  
**Eindhoven**  
University of Technology

**Where innovation starts**

# Processing for Android installation

- Download and install Android Studio

<http://developer.android.com/sdk/index.html>

or

- Download and install Android SDK

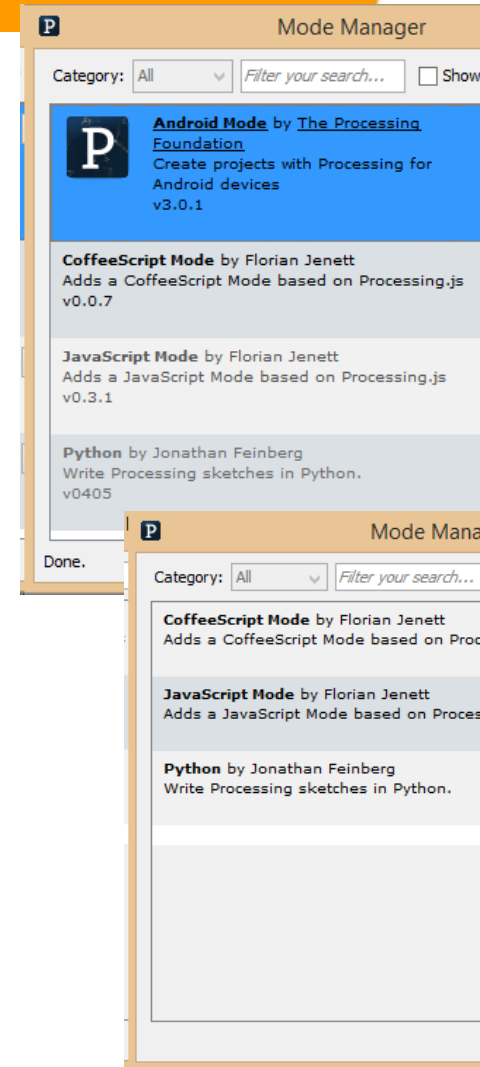
<https://developer.android.com/sdk/installing/index.html?pkg=tools>

then

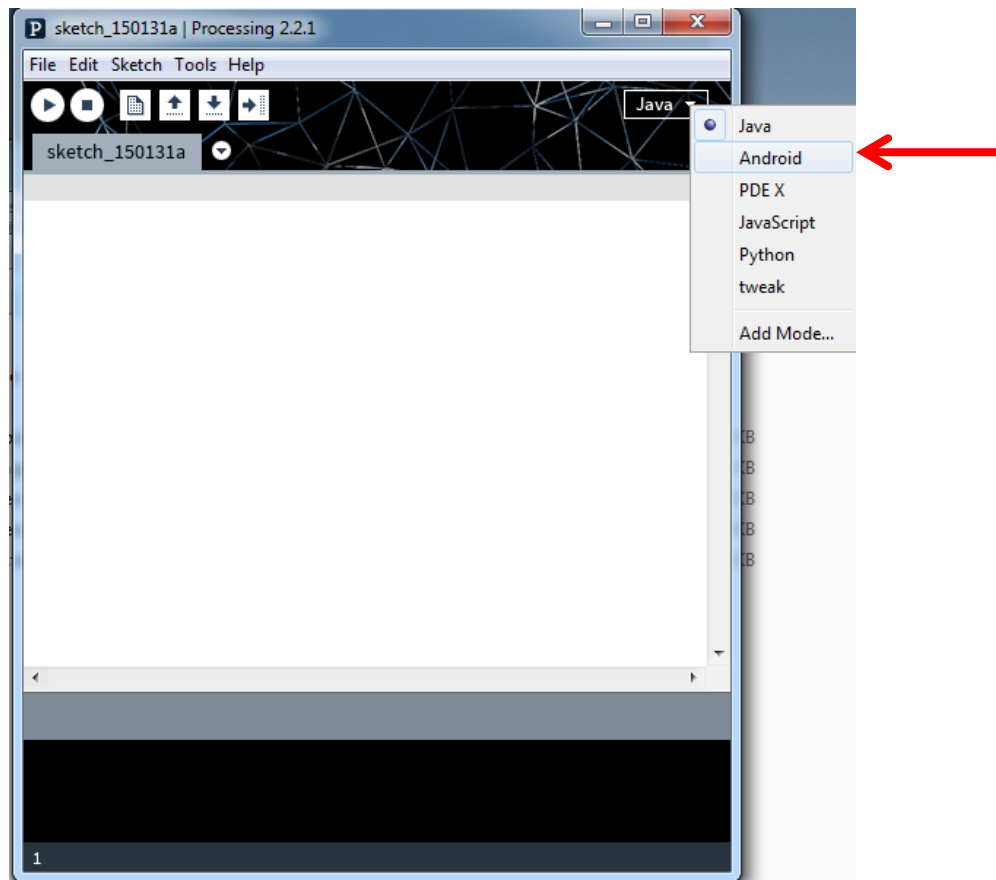
- Download and install processing 2.2.1

<https://processing.org/download/?processing>

- Start Processing 2.2.1
- Add Android Mode.
  
- If you can not find Android Mode in the mode manager
  - Download Processing 3.0a5
  - Add Android Mode
  
- Restart Processing (either 2.2.1, or 3.0a5)



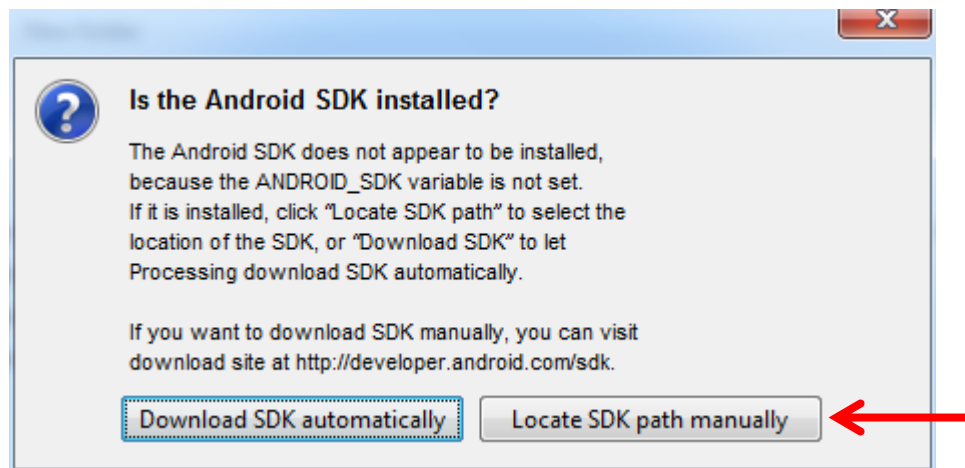
- Start processing and switch to Android mode



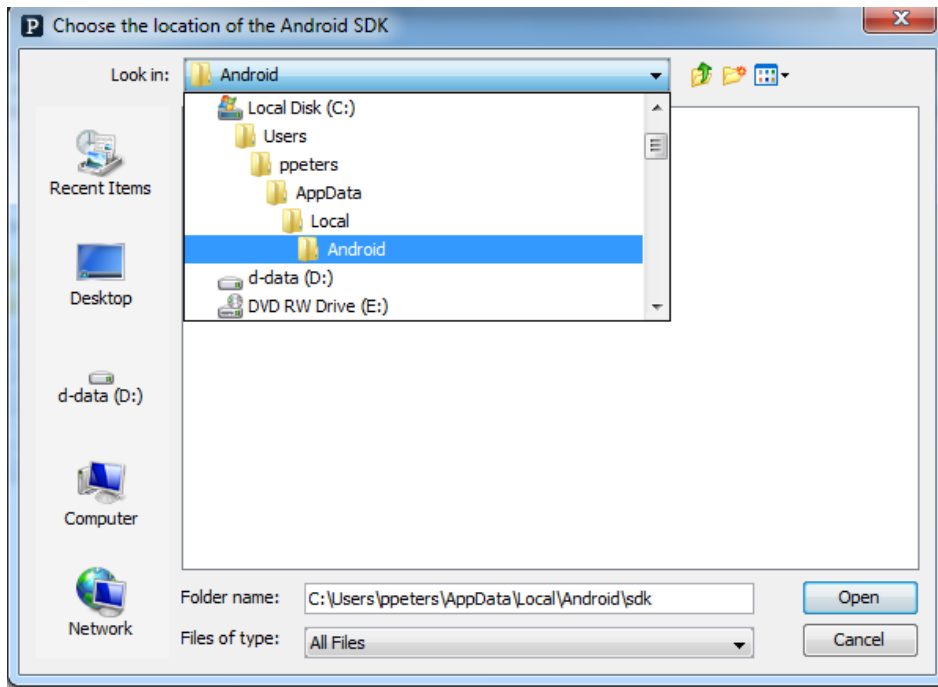
- **Locate the Android SDK**

C:\Users\

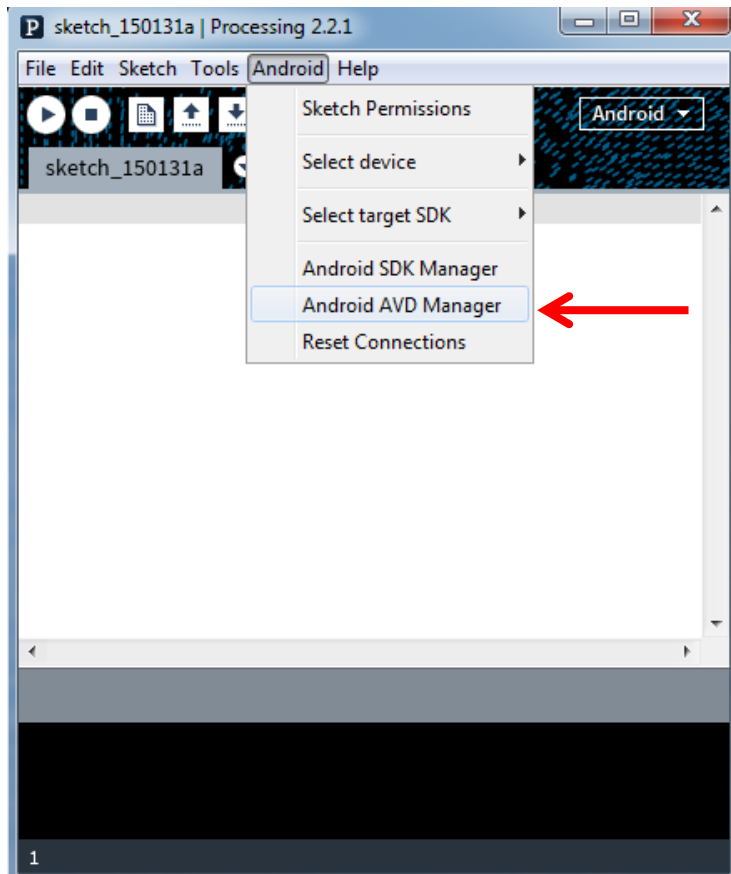
Or wherever you installed the standalone Android SDK



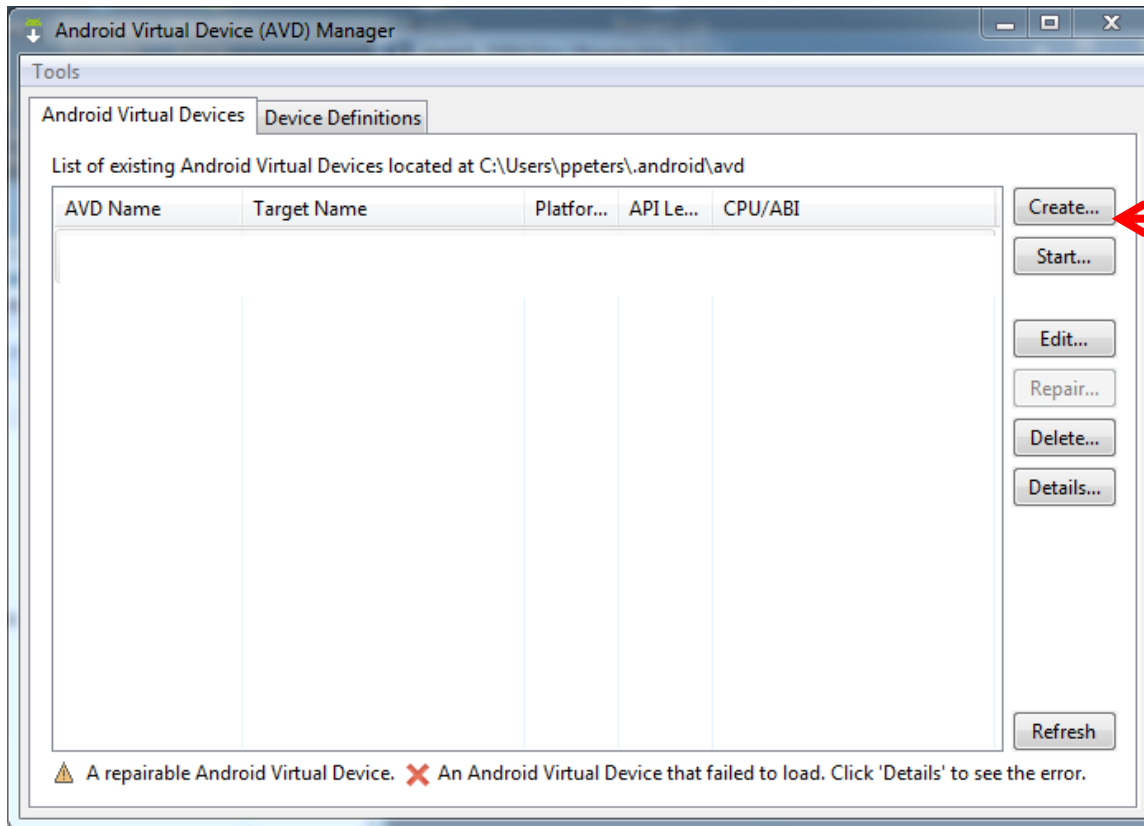
- Select Android SDK location



- Go to Android AVD manager

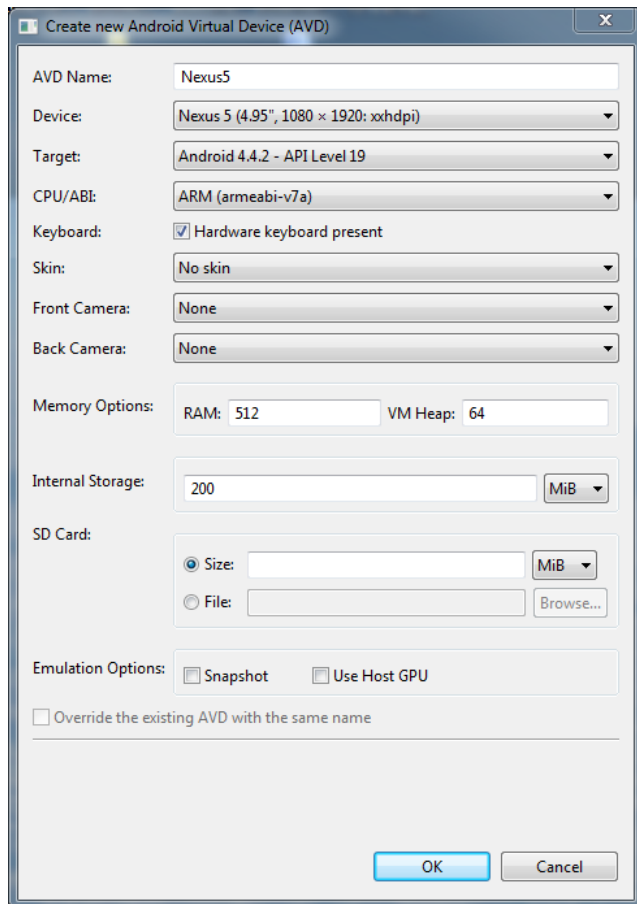


- Create a virtual device

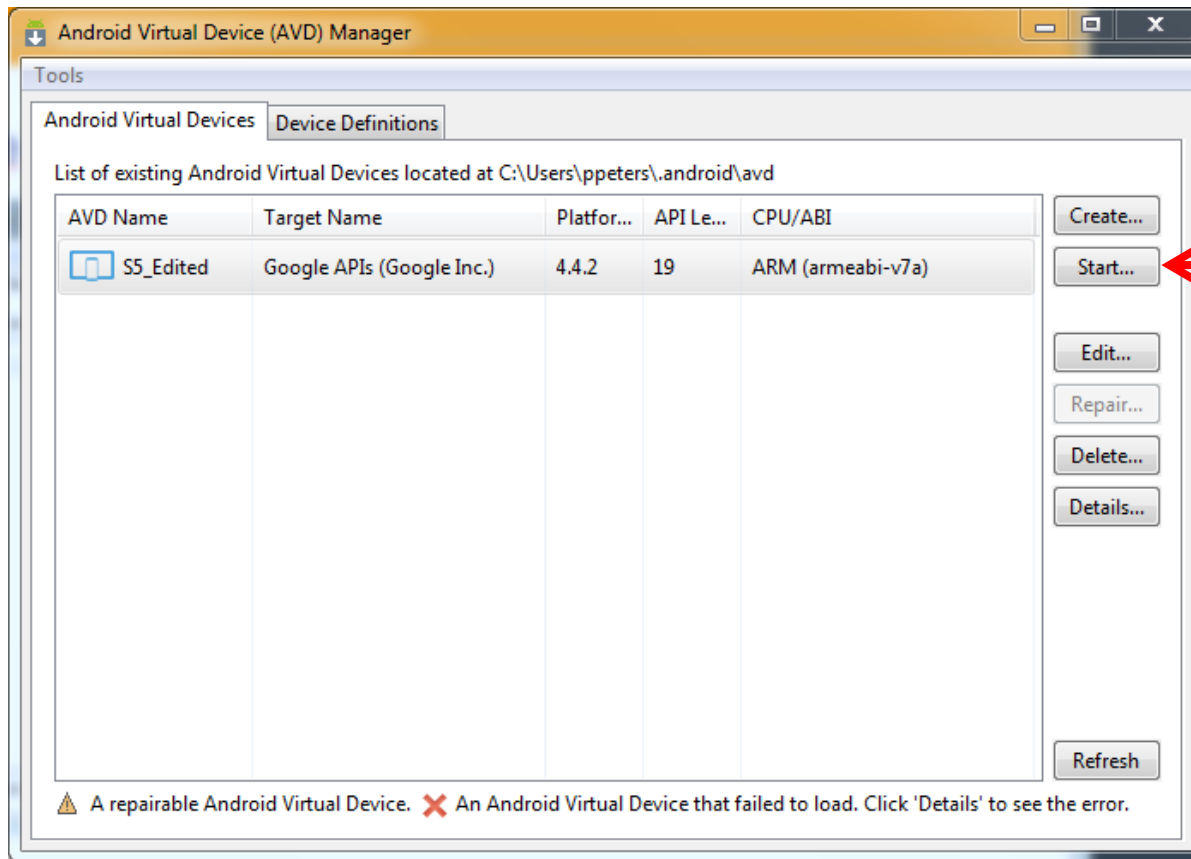




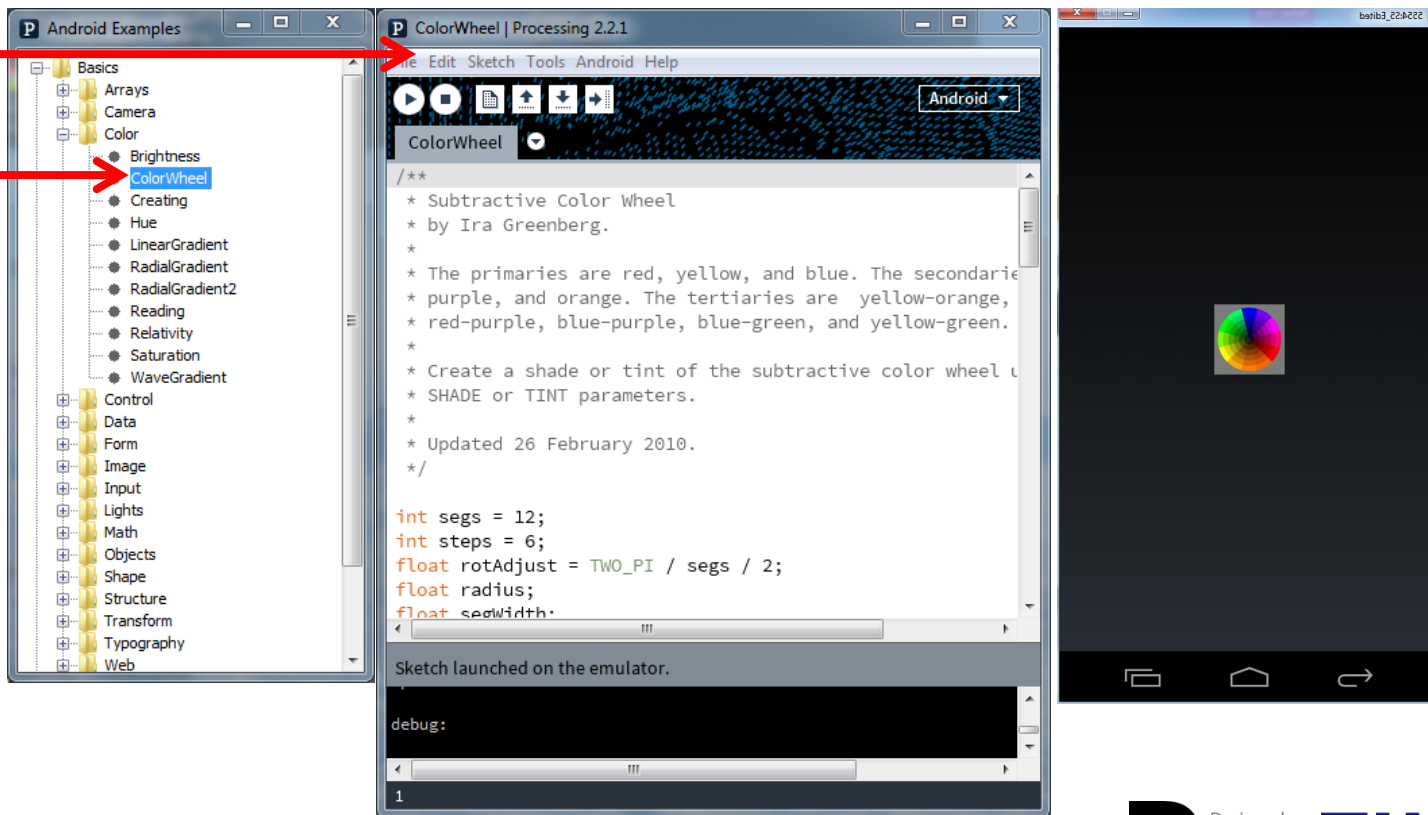
- Select appropriate device



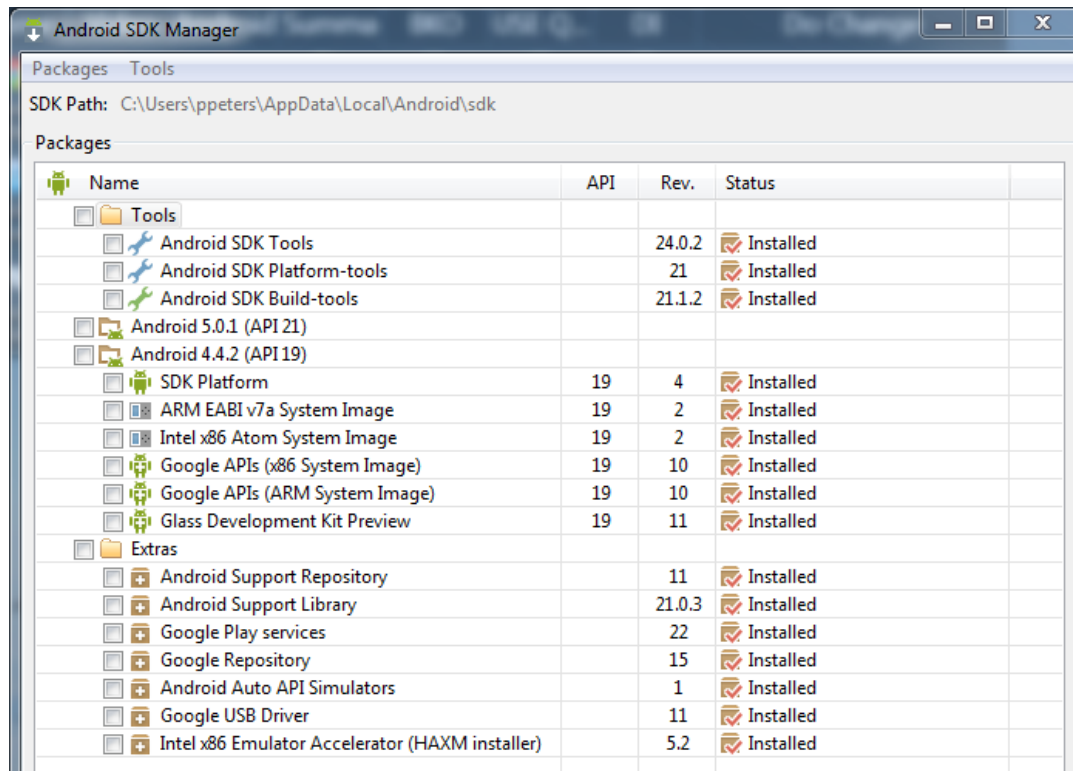
- Select device and start (takes some time...)



- Close AVD manager
- Select an example sketch and run in emulator



- This is what I had installed in SDK manager



- Here's where all of this is explained as well:

<https://github.com/processing/processing-android/wiki>