

# Processing and Android

The background of the slide features a photograph of the TU/e campus. A large, yellow, abstract sculpture with red bands is the central focus. In the foreground, several people are walking along a path, some behind a green metal fence. The image is partially obscured by a semi-transparent orange overlay on the left side.

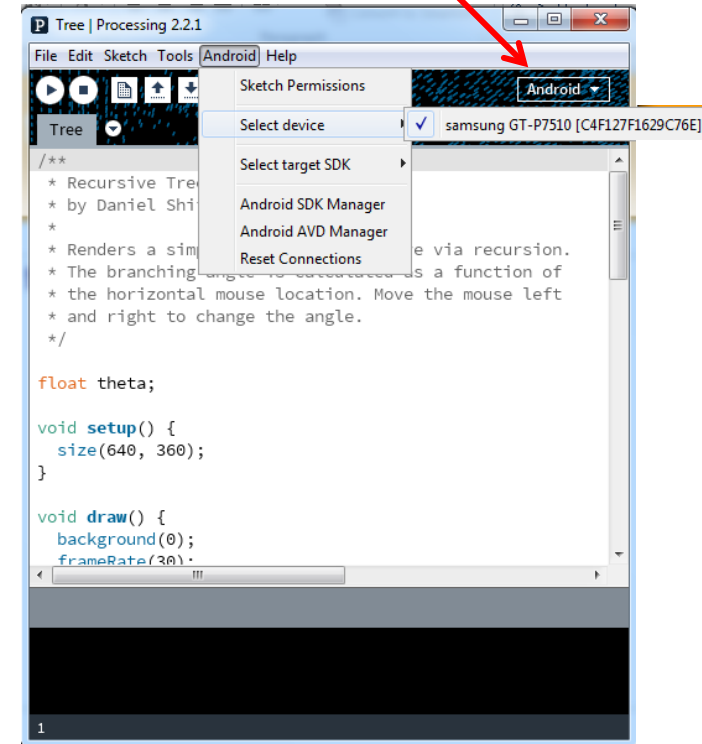
**TU** / **e**

Technische Universiteit  
**Eindhoven**  
University of Technology

**Where innovation starts**

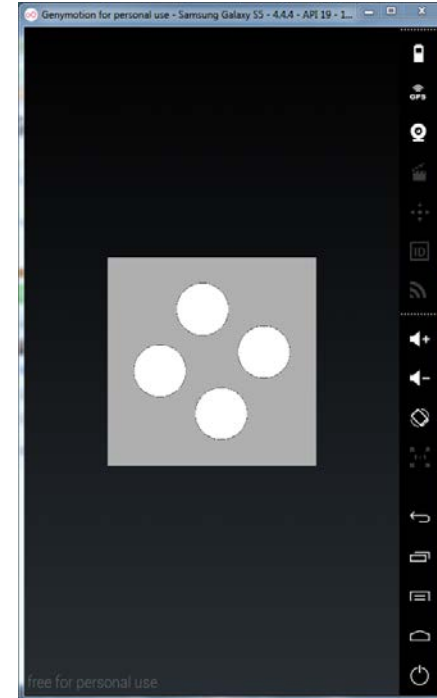
# Basics

- Start processing in Android mode
- Start emulator / Connect device
- Load sketch
- Run sketch on device



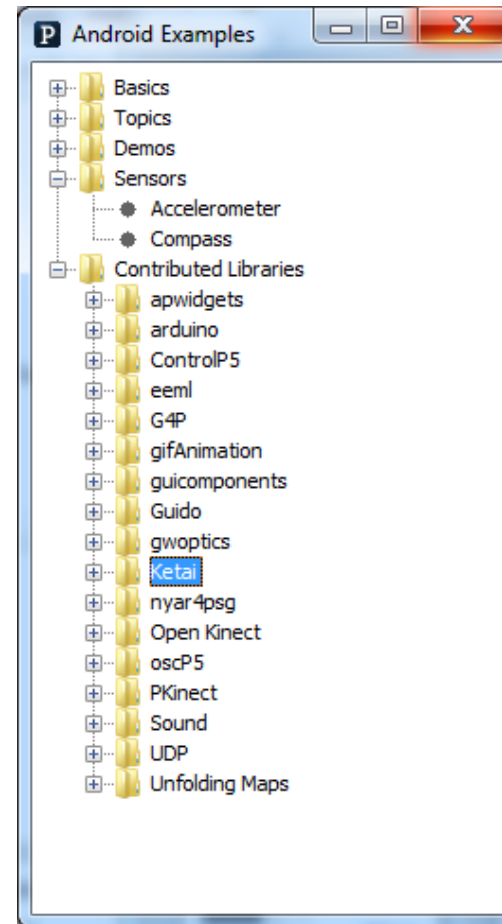
# Basics

- Start processing in Android mode
- Start emulator / Connect device
- Load sketch
- Run sketch on device
- ( Circles , Tree, RGB )

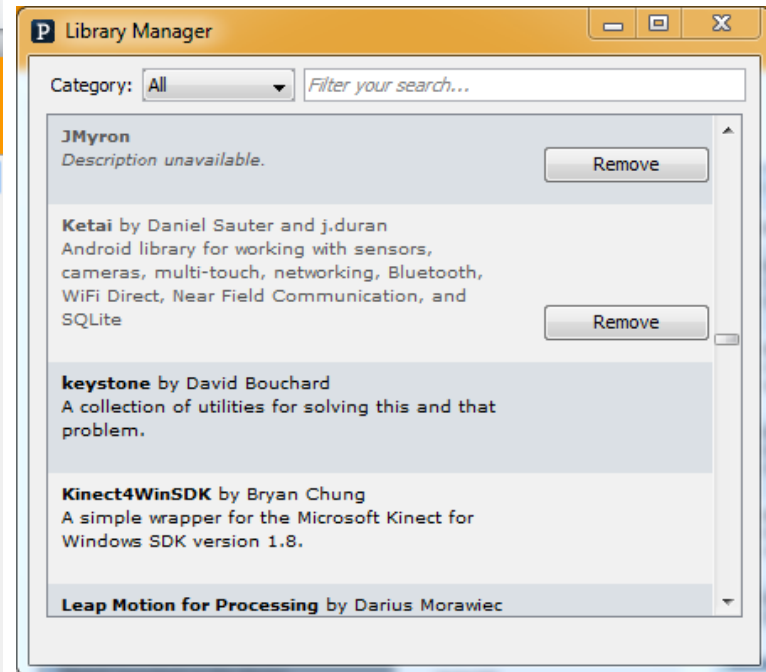
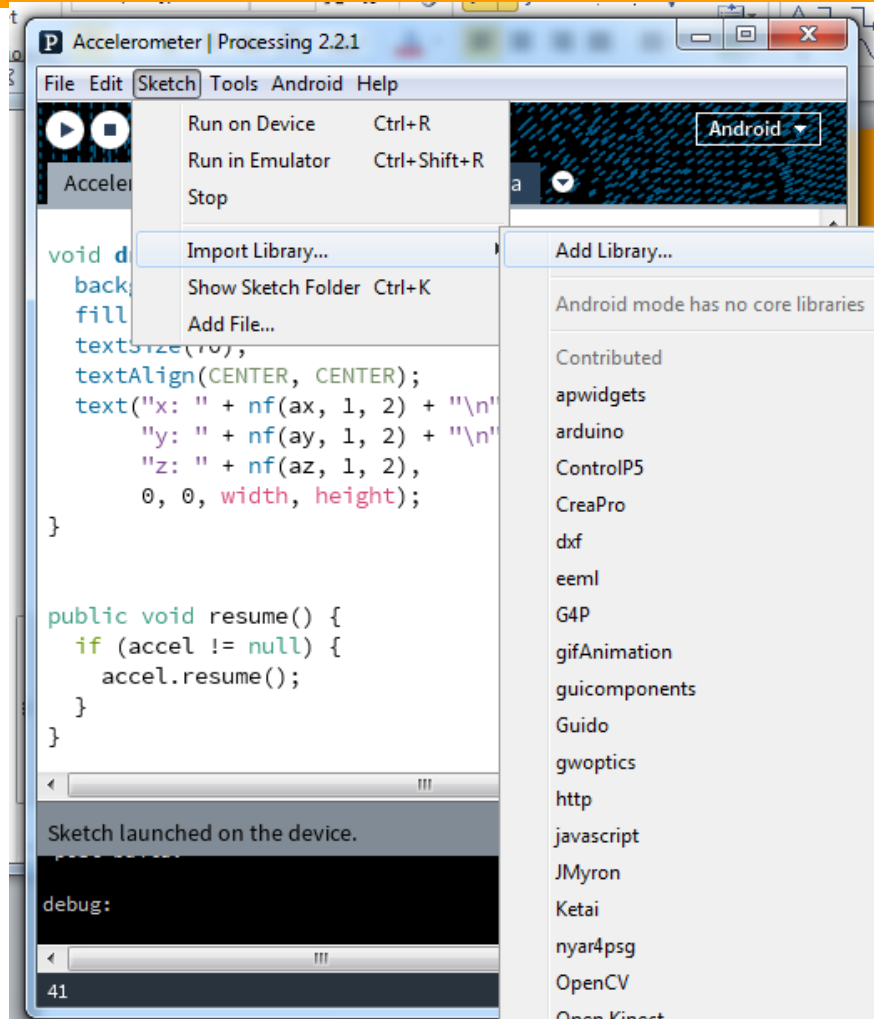


# Sensors

- A real device is useful...  
(has real sensors)
- Accessible:
  - Accelerometer
  - Compass



# Libraries / Ketai

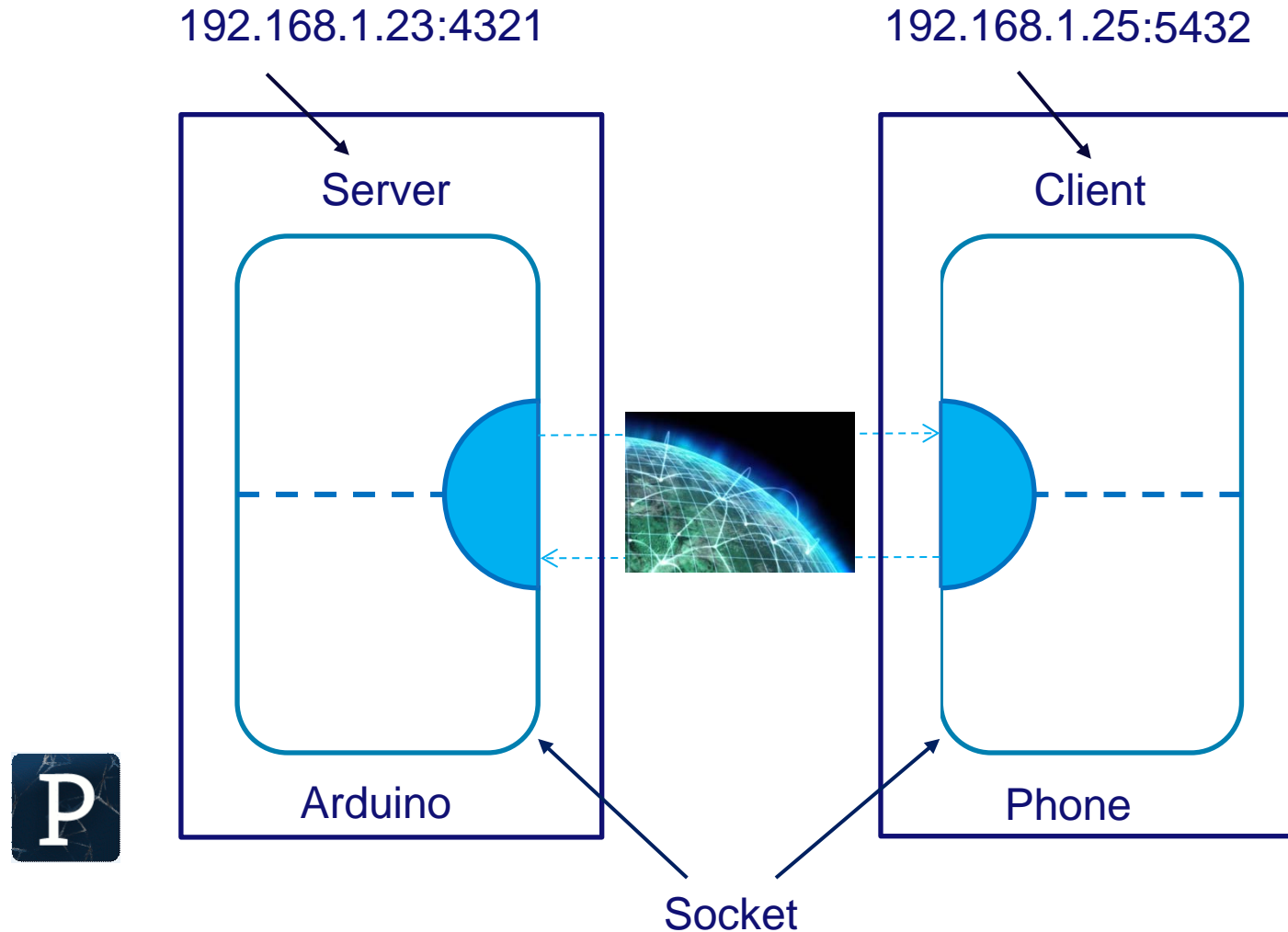


<https://code.google.com/p/ketai/>

- No... well... sort of...
- Either 'manually' (see RGB cube example) or....
- Libraries:
  - <https://code.google.com/p/apwidgets/>
  - <http://www.sojamo.de/libraries/controlP5/>
  - <https://code.google.com/p/ketai/>



# Networking



- **Useful:**

- <https://www.genymotion.com/#!/download>
- <https://github.com/processing/processing-android/wiki>
- [https://downloadcenter.intel.com/Detail\\_Desc.aspx?DwnldID=22695&lang=eng&ProdId=3551](https://downloadcenter.intel.com/Detail_Desc.aspx?DwnldID=22695&lang=eng&ProdId=3551)

- **Nice:**

- [Game mechanics explorer \(js\)](#)
- [Khan academy javascript programming](#)
- [Processing tutorial 7 Jaboston.com](#)
- [Processing tutorial 6 Jaboston.com](#)

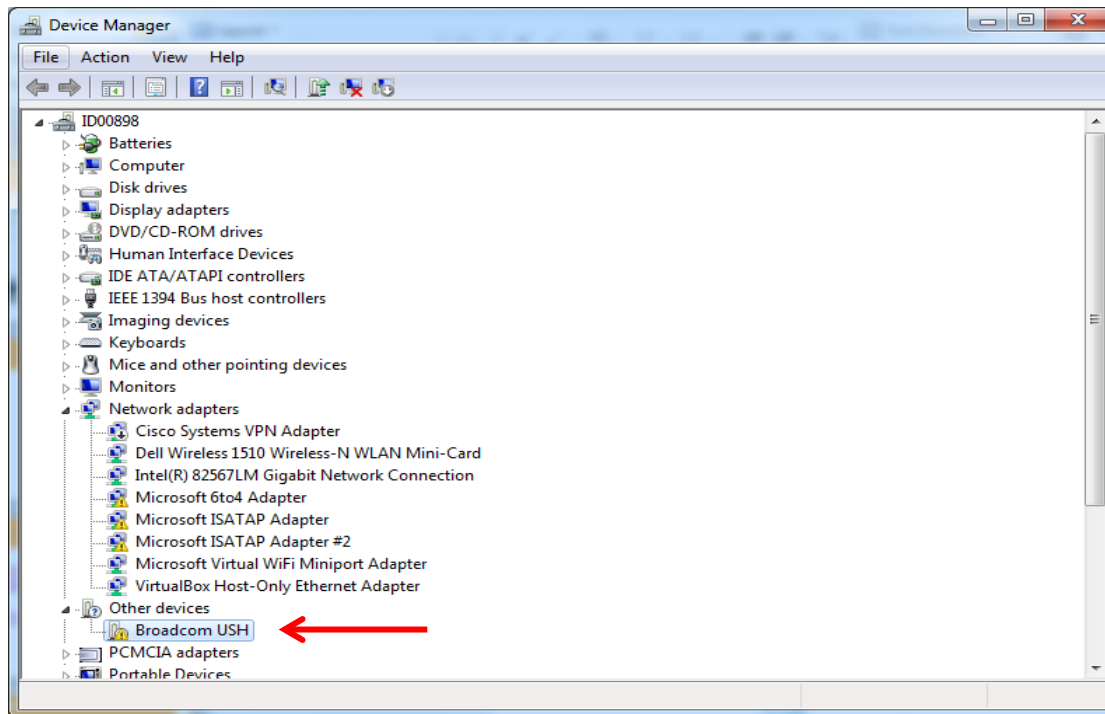


# Deliverables

- **Android phone owners:**
  - **Create an interactive app using one (or more) sensors.**
- **Emulator only:**
  - **Create an interactive app that uses touch input.**
- **Email in one single ZIP file to:**  
**creativeapps.submission@gmail.com**
  - **source code**
  - **screen copy of output**

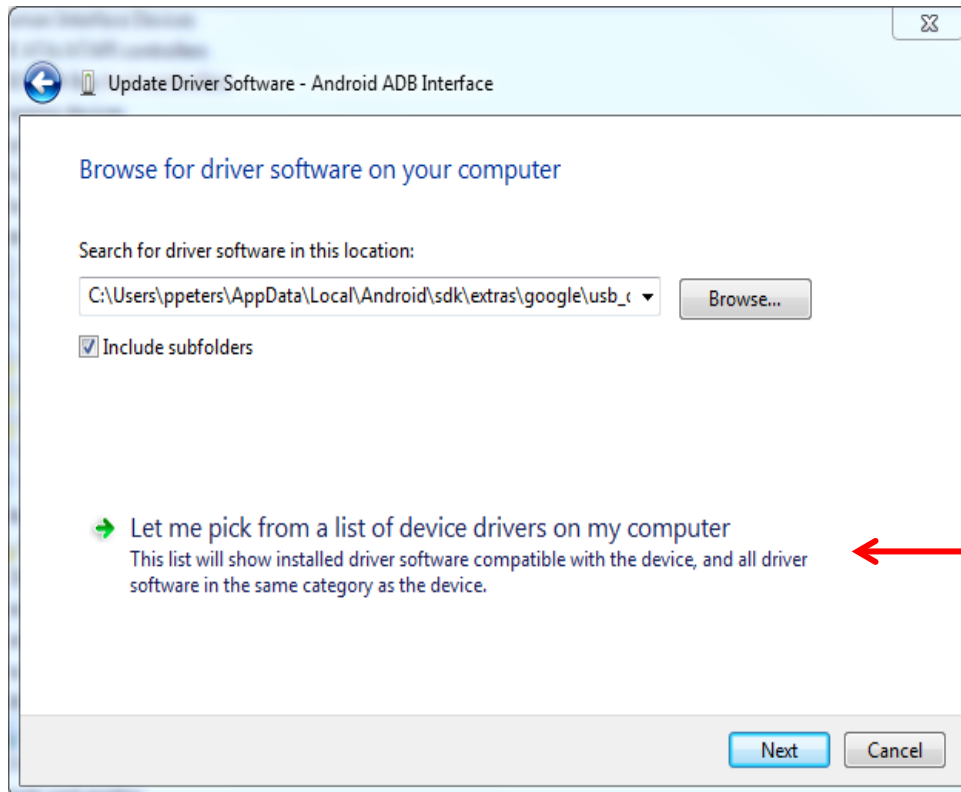
# USB driver ADB

C:\Users\



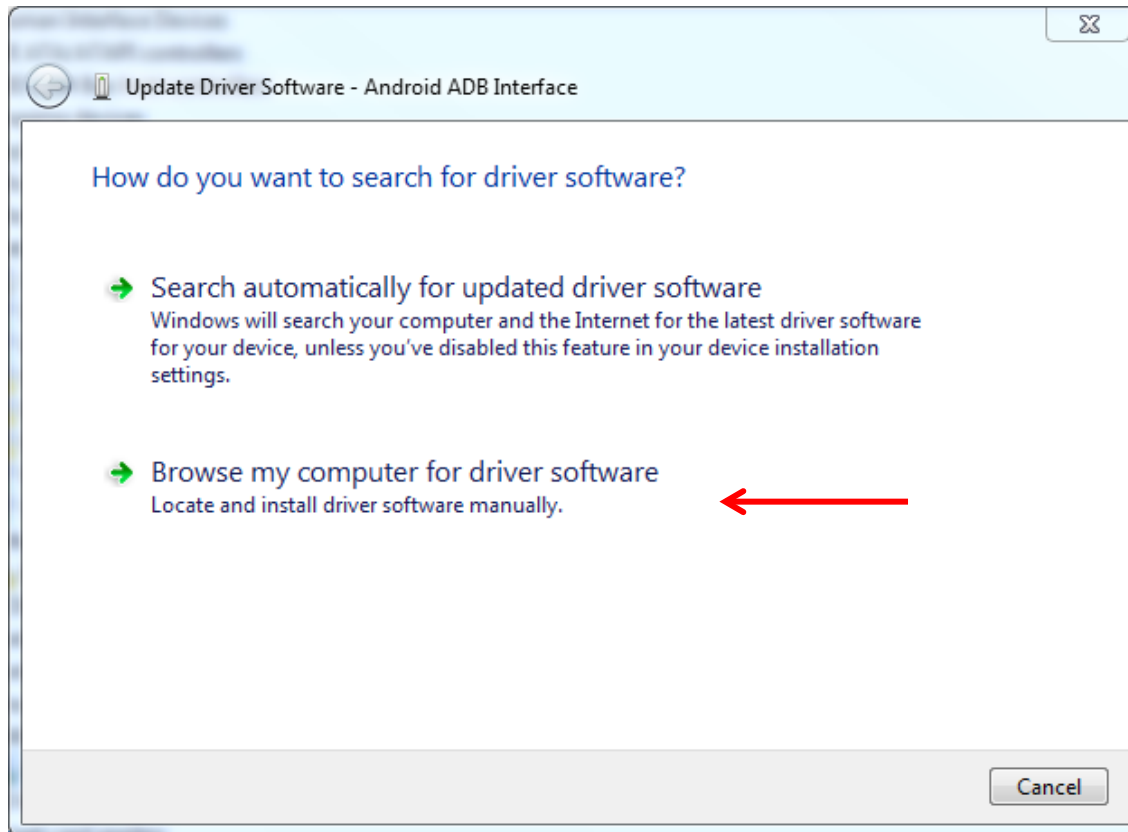
# USB driver ADB

**C:\Users\**



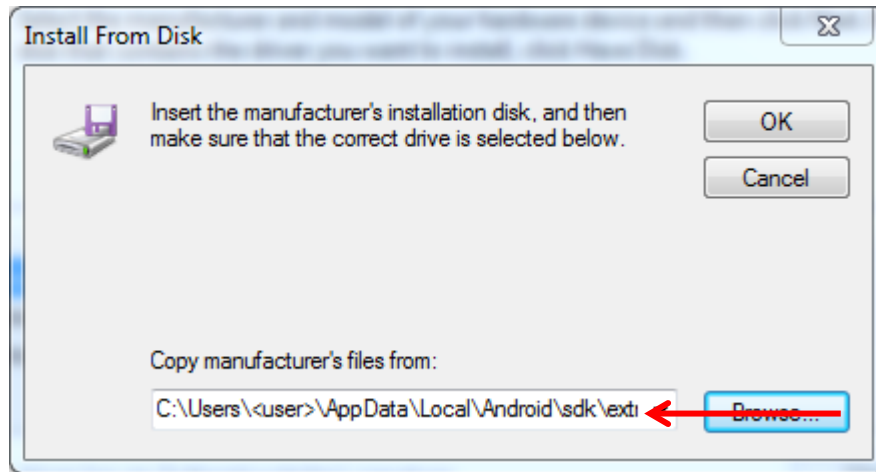
# USB driver ADB

**C:\Users\<<user>\AppData\Local\Android\sdk\extras\google\usb\_driver\android\_winusb.inf**



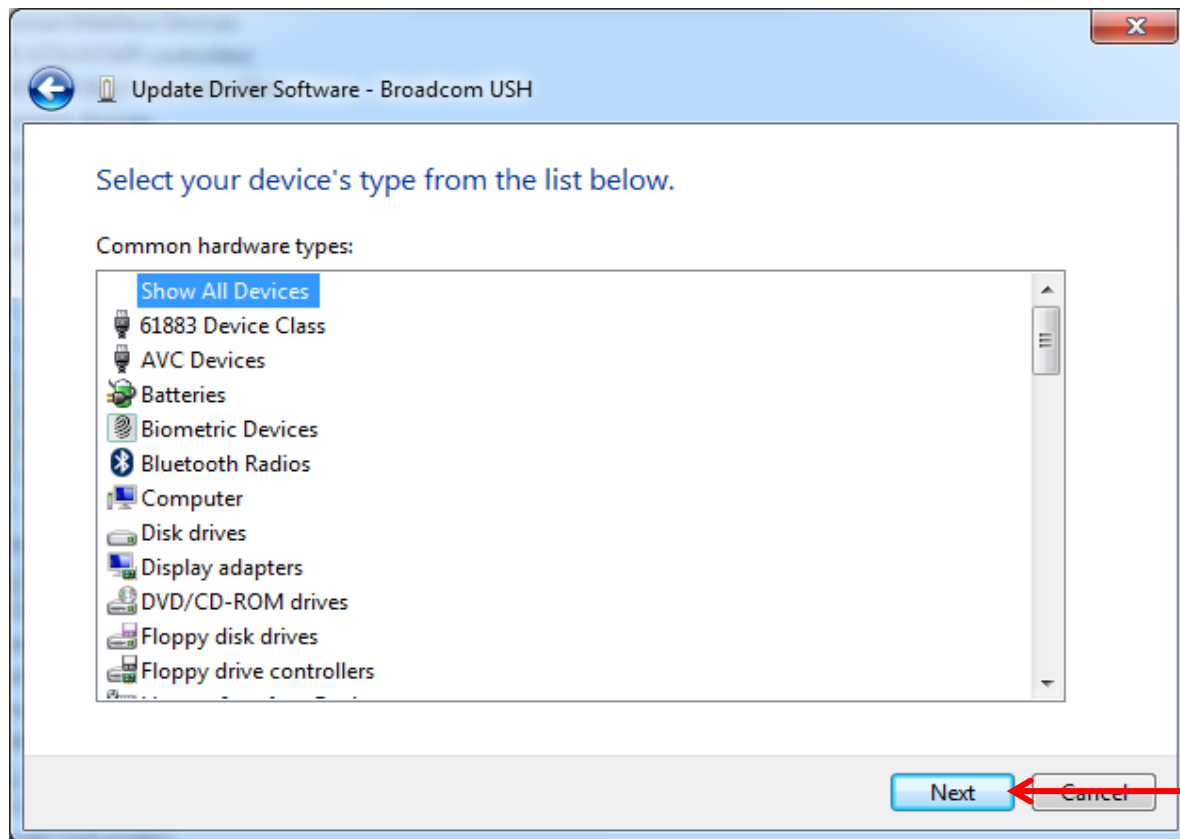
# USB driver ADB

**C:\Users\**



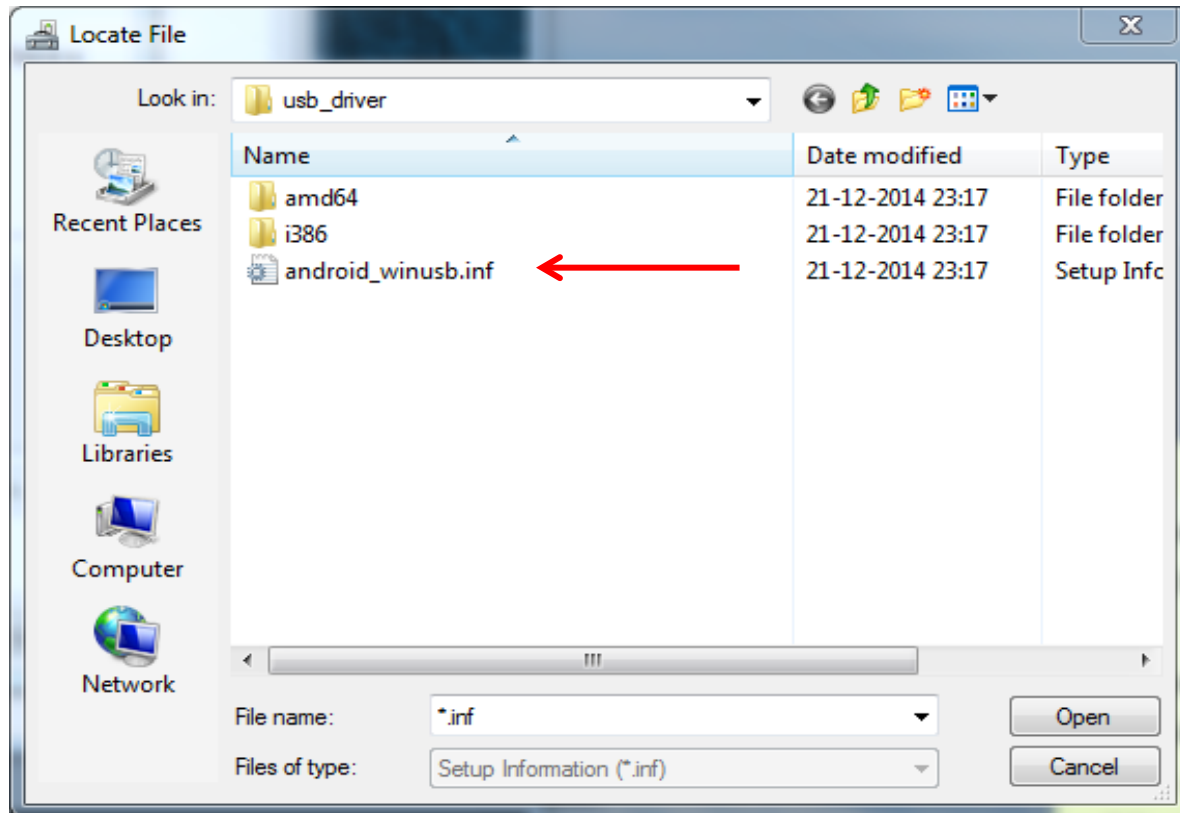
# USB driver ADB

C:\Users\



# USB driver ADB

**C:\Users\<<user>\AppData\Local\Android\sdk\extras\google\usb\_driver\android\_winusb.inf**



# USB driver ADB

C:\Users\

