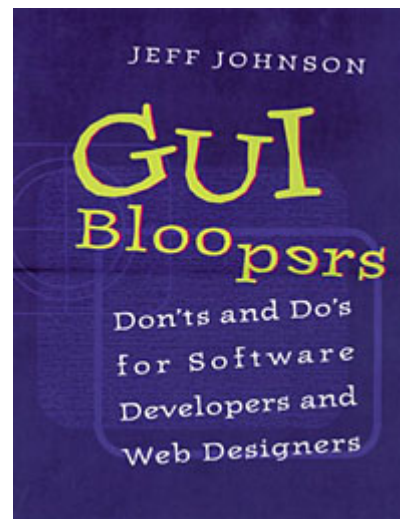


GUI Bloopers: Don'ts and Do's for Software Developers and Web Designers



Ine Mols, Olaf Corduwener, Nick Hermans

Group 1

Three kinds of Bloopers

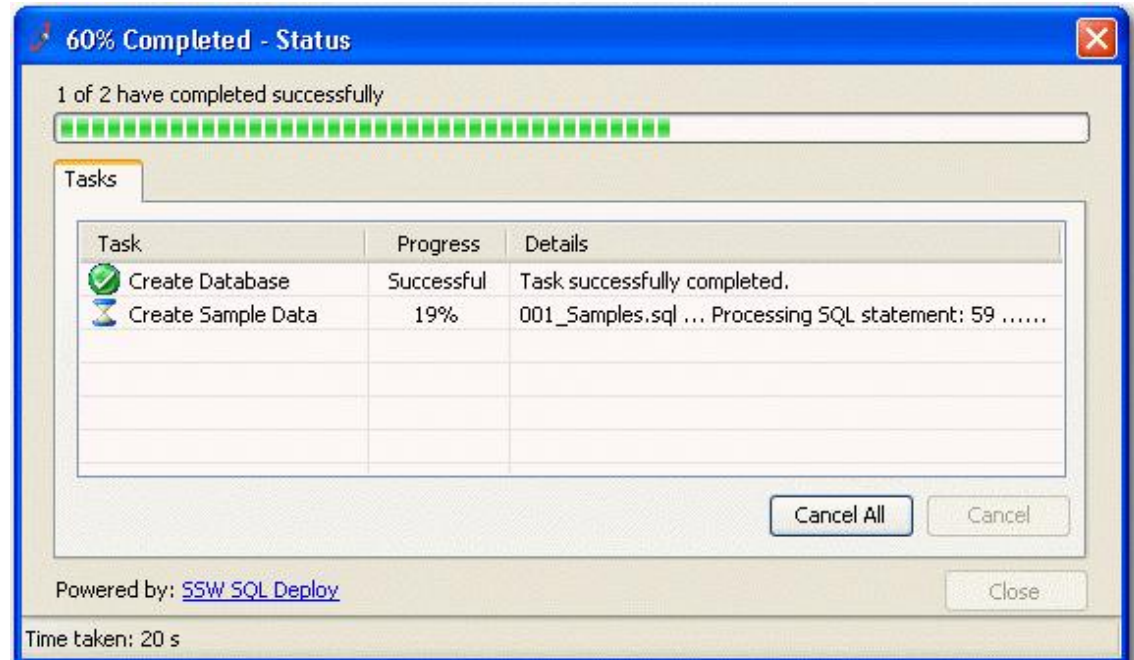
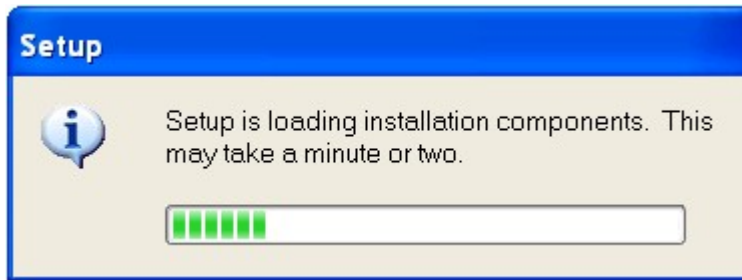
- Responsiveness Bloopers
- Management Bloopers
- User-Guide Bloopers

Responsiveness Bloopers

- Responsiveness vs. performance
- Examples:
 - Busy- indicators
 - Progress bar, no- or faulty progress bar
 - Keeping up with user input
- Guidelines
 - 0,1 sec – 1 sec – 10 sec

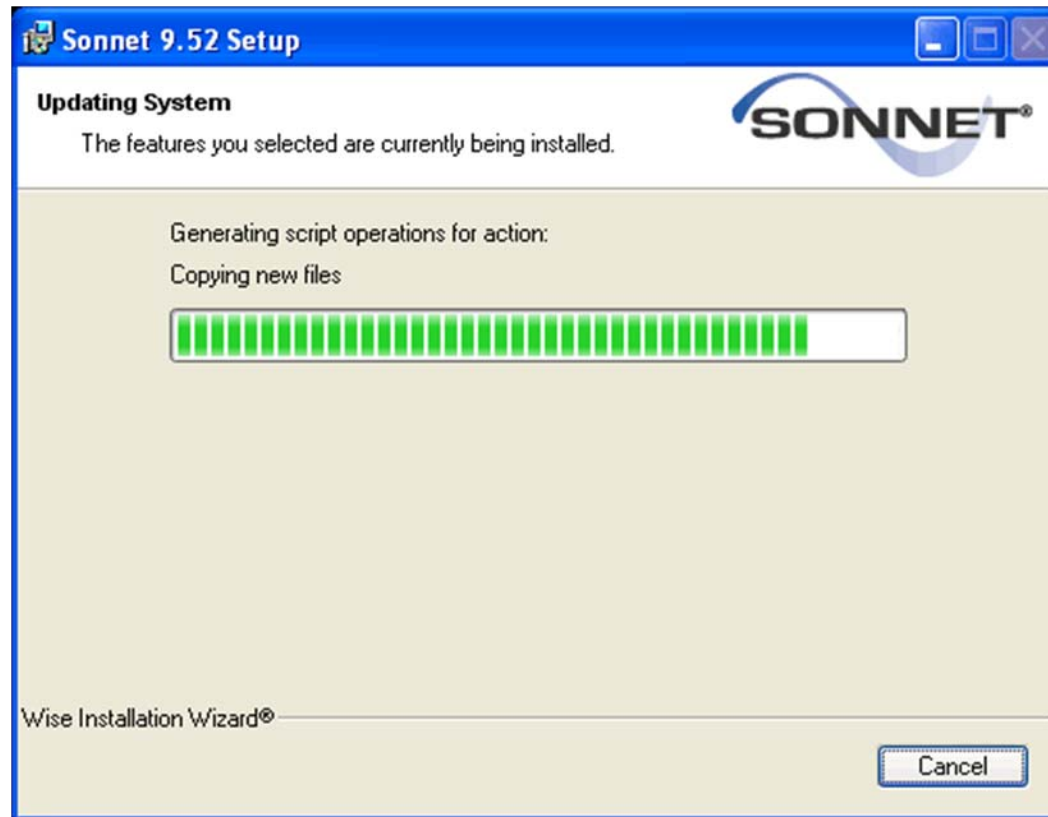
Responsiveness Bloopers

Good Example



Responsiveness Bloopers

Bad Example



Management Bloopers

- Misunderstanding what user interface professionals do
 - GUI programmer – graphic designer
- Giving user interface low priority
 - Assuming it's only 'fonts and colors'
 - Users can adapt to anything
- Iterative process and testing
- Lack of task domain expertise
- Giving programmers the fastest computers

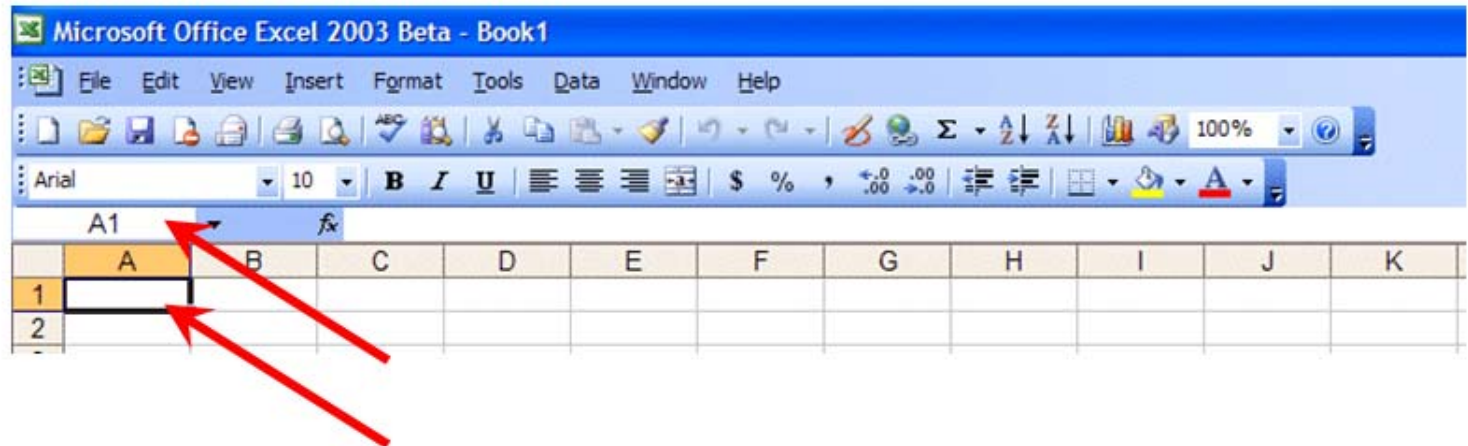
User-guide Bloopers

- Confusing / non consistent terminology
- Non existing or visible options / functions
- Contradicting instructions
- Steps or windows are skipped in the guide

User-Guide Bloopers

Good Example

Introduction Tutorial



Notice that the “**main**” part of the spreadsheet is composed of **Rows (Labeled 1, 2, 3, 4, etc.)** and **Columns (Labeled A, B, C, D, etc.)**. There are a lot of rows and columns in a spreadsheet.

- Consistent in terminology and screenshots added

Source: <http://www.officetutorials.com>

Non-consistency with guide

Good Example

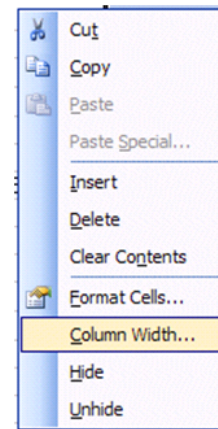
Tutorial

B
Parents
Job
Investments
Total
Food
Beverages
Parties
Miscellaneous
Total

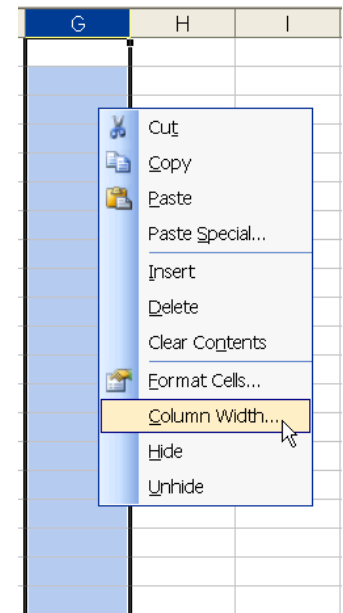
This is one way to widen a column. Here is **another** way. Point to the **B** at the top of column B (in the Gray area) and click the **left** mouse button (The cell should turn **dark blue** and the column **light blue**.).

Now, **keeping** the cursor somewhere in the “blue” area, click the **Right Mouse Button**. Notice that a menu with **Column Width...** appears.

Click-on **Column Width...** and type in 15 and click-on OK. This is another way to widen a column.



Program



Non-consistency with guide

Bad Example

Online Tutorial

Moving the mouse further left, out of this list another list appears. It has the same nodes but now sorted by category. Scroll down to the category *Value* and click the node *+ (Value)*. Not *+ (Value) Spectral*?

Program

```
Value
- * (Spectral) * / + (Spectral) + < <=
= > >= AsString Attractor (Self) Attractor
Bit.v4p B-Spline Count DFT Expr Frac
Gamma GaussJordan GCD InputMorph
IOBox (Advanced) LCM Log Mantissa Map
(Interval) Map MapRange Max Min Mod
Pot Power QuadraticEquation R Radix
Random S Select Sift Sign Switch (Input)
Switch (Output) WaveShaper
Vector
Resample.v4p
VVVV
About Args Boost Boygroup (Client)
Boygroup (Server) CreateNode DeleteNode
```

```
...
- (Color) - (Complex) - (Spreads Sets) - (String) -
(Value) * (3d Cross) * (3d Dot) * (3d Vector) *
(3d) * (4d Vector) * (4d) * (Color) * (Complex) *
(Differential ConstantScale) * (Differential) *
(Quaternion) * (String) * (Transform) *
(Value Spectral) * (Value) / (Complex) /
(Differential) / (Value) + (Color) + (Complex) +
(Differential) + (String Spectral) + (String) +
(Value Spectral) + (Value) < (Value) <= (Value)
= (Spreads Sets) - (String) = (Value) > (Value) >
= (Value)
A
About (VVVV) Abs (Complex) Address
(EX9.SamplerState) ADSR (Animation) AlphaTest
(EX9.RenderState) AND (Boolean Spectral) AND
(Boolean) ApplyTransform
(Transform Direction).v4p ApplyTransform
(Transform Vector) ApplyTransform (Transform)
ArbitraryPoint (Transform Vector) ArbitraryPoint
(Transform) Arg (Complex) Args (VVVV) Arrow
```

Source: <http://vvvv.org> & *vvvv.exe*

A thick red curved shape, resembling a large arc or a partial circle, is positioned on the left side of the slide, extending from the top to the bottom.

Thank you for your attention